

Sustainability
services and
solutions



Contents

Our portfolio	2
CGI's Plan A	3
Nature-based services and solutions	4
Data-driven climate pathways	6
Social Value insights	9
Advanced digital supply chain	11
Sustainability innovation and development	14
Client success story	16

Our portfolio

A letter from our Chief Sustainability Officer

In recent years, the global push for sustainability has intensified. There are increasing regulatory demands, societal expectations and environmental responsibilities. Organisations must now prioritise sustainability and take meaningful and measurable actions.

At CGI, sustainability is at the heart of all we do. We play a critical role in supporting the United Nation's global agenda. We supported the launch and are proud to be among the first organisations to begin reporting to help shape the Taskforce on Nature-related Financial Disclosures (TNFD) guidelines, because we believe safeguarding natural capital is vital.

We are also committed to helping our clients meet ever-evolving demands, supporting them to reduce their social and environmental impacts, improve the communities in which they operate and advance sustainable development. Trusted to do complex things well, CGI's cutting-edge technological capability, and sustainability expertise helps businesses to:

- Account for, report, manage and quantify their impact
- Meet social value targets and regulatory requirements
- Enhance their talent pipelines
- Improve transparency, accountability and trust

Our portfolio at a glance:

Our sustainability services and solutions cut across five pillars:



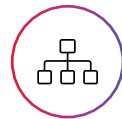
Nature-based services and solutions



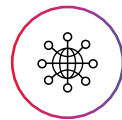
Data-driven climate pathways



Social Value insights



Advanced digital supply chain



Sustainability innovation and development

Take a look at our CGI sustainability services and solutions. We look forward to discussing how our tools and advisory can help your organisation.



Mattie Yeta

Chief Sustainability Officer
CGI UK and Australia

CGI's Plan A

Guiding your approach

A robust Plan A is about capturing innovative ways that our customers can do good in the world, with a focus on all operations and the entire value chain. At CGI, we follow a rigorous Plan A approach (assess, aim, achieve and account) to not only realise our goals, but those of our clients too.

Through our technologies and services, we optimise your sustainability programme by implementing the aspects of the assess, aim, achieve, account using a science-based framework that's relevant to your organisation.



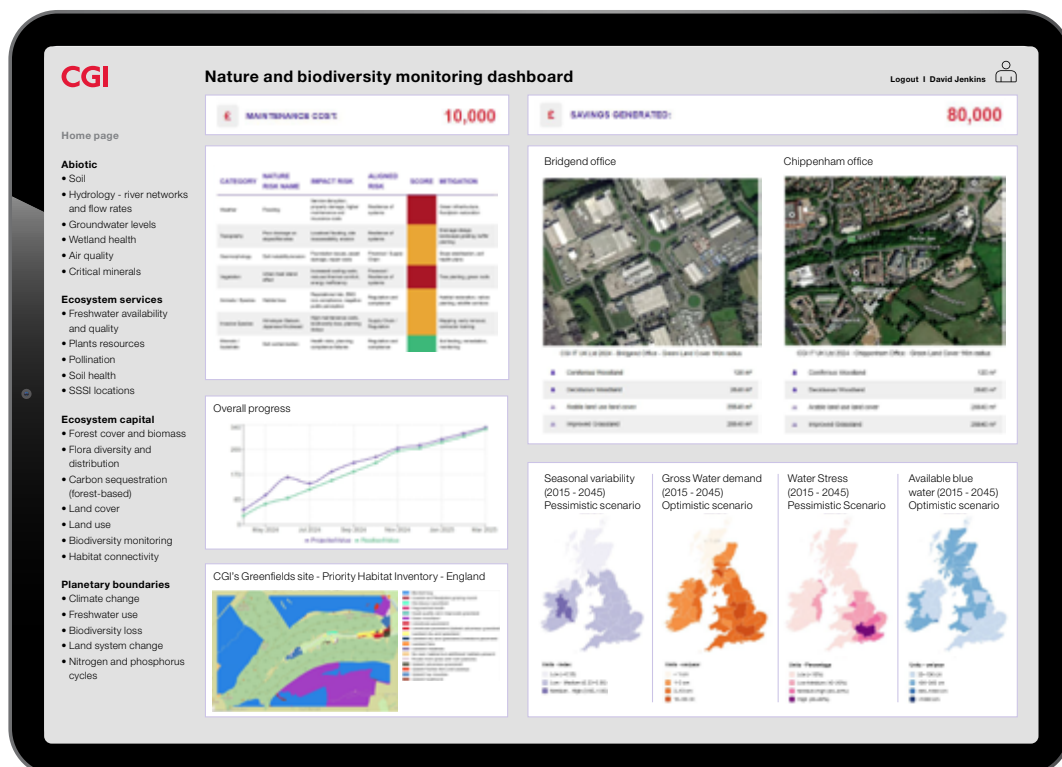
Nature-based services and solutions

Our experienced sustainability team helps companies develop programmes that put nature and communities at the very centre. CGI's services and solutions enable trustworthy monitoring, reporting and verification of programmes and project outcomes, through sophisticated and advanced data gathering and analysis methods.

Our capabilities include but are not limited to natural capital risk assessments to support robust investment, value chain natural capital reporting, TNFD reporting and compliance.

Key outcomes

- 1 Enhanced business resilience
- 2 Proactive risk management
- 3 Foresight of evolving environmental regulations
- 4 Data-driven decision making
- 5 Sustainable strategy and impact reduction



Services and solutions

Audits and assessments of your natural capital impacts and dependencies

- Establish a baseline for measuring and improving ecological performance
- Identify key environmental dependencies through a lifecycle approach
- Gain a clear understanding of your organisation's interaction with nature

Regulatory compliance and reporting

- Ensure adherence to evolving disclosures including nature-related financial disclosures and biodiversity net gain
- Enhance transparency and credibility with stakeholders and investors

Nature-based risk and opportunities management

- Proactively address risks and opportunities
- Enhance resilience against climate change, biodiversity loss, and resource scarcity

Natural capital mapping with geospatial and Earth Observation data

- Leverage geospatial data and technologies to visualise and assess environmental impact
- Improve decision-making through precise ecosystem mapping
- Identify high-risk areas and prioritise mitigation and adaptation efforts

Natural capital strategy and target setting

- Define measurable, science-based targets aligned with global biodiversity goals
- Develop actionable strategies for reducing ecological footprint



Sectors

Our services and solutions can be adapted and modified for any industry. At CGI, we have a strong focus and expertise in banking, utilities, energy and renewables, property and estates construction, government, oil and gas.

“CGI helped us to push the boundaries of the application of science to improve sustainability of the environment and the links between people and nature.”

Andrew Bell

Chief Executive Officer, North Devon UNESCO Reserve Biosphere



Data-driven climate pathways

We support forward-thinking companies to develop pragmatic sustainability strategies that engage their customers, stakeholders and employees as they navigate towards net zero.

We provide robust sustainability solutions for our clients to create positive economic, social and environmental impact. The combination of our in-depth knowledge, leading IT solutions, and end-to-end service offerings help our clients successfully manage sustainability opportunities and challenges.

Key outcomes

- 1 Enhanced business resilience
- 2 Clear net zero roadmap
- 3 Regulatory compliance and transparency
- 4 Operational efficiency and cost savings



Services and solutions

Climate-related risks and auditing

- Identify exposure in operations and supply chains due to climate change
- Define clear risk mitigation strategies to enhance resilience
- Future-proof the business against regulatory and climate-related disruptions
- Align with industry auditing standards for company robustness

Net zero strategy and implementation

- Conduct double materiality assessments
- Accelerate decarbonisation through a structured roadmap to net zero
- Meet corporate sustainability commitments while driving cost efficiencies
- Use sector specific emission targets to ensure strategy aligns with operational requirements
- Ensure compliance with legal reporting requirements embedded into roadmap

Science-based target setting

- Develop robust scenario modelling
- Align business goals with global climate science
- Define measurable and achievable emissions reduction targets
- Align to verified reporting frameworks and industry standards e.g. SBTi, CDP
- Utilise advanced tools to track, measure, and reduce carbon impact

Climate disclosures and compliance

- Transparency and adherence to global reporting frameworks (TCFD, CSRD, ISSB, PPN, SECR)
- Improve ESG ratings and regulatory compliance
- Build trust and secure investor confidence

Circular economy solutions, dashboarding and automation

- Reduce waste, enhance resource efficiency, and automate sustainability data
- Streamline tracking and reporting of circular economy initiatives
- Identify hotspots for waste reduction strategies
- Align with industry waste management and compliance

Carbon and sustainability reporting

- Accurately track and report emissions
- Continuously improve with data-driven insights
- Strengthen accountability and support strategic decision-making
- Leverage climate data and scenarios for informed decision-making



Sectors

Climate affects everyone. At CGI, we make compliance easy and enable organisations across all sectors to meet mandatory legal requirements with seamless disclosure and reporting solutions.



“CGI worked closely alongside University Hospitals Plymouth NHS Trust to help us understand the sustainability data we had and how best to use this to progress towards our ‘For a Greener NHS’ targets. We now have a clear plan of action and, thanks to the forum, everyone’s aware of the hospital’s baseline carbon footprint, as well as both our short and long-term goals.”

Kirsty Wavish Green Plan
Programme Manager University Hospitals Plymouth

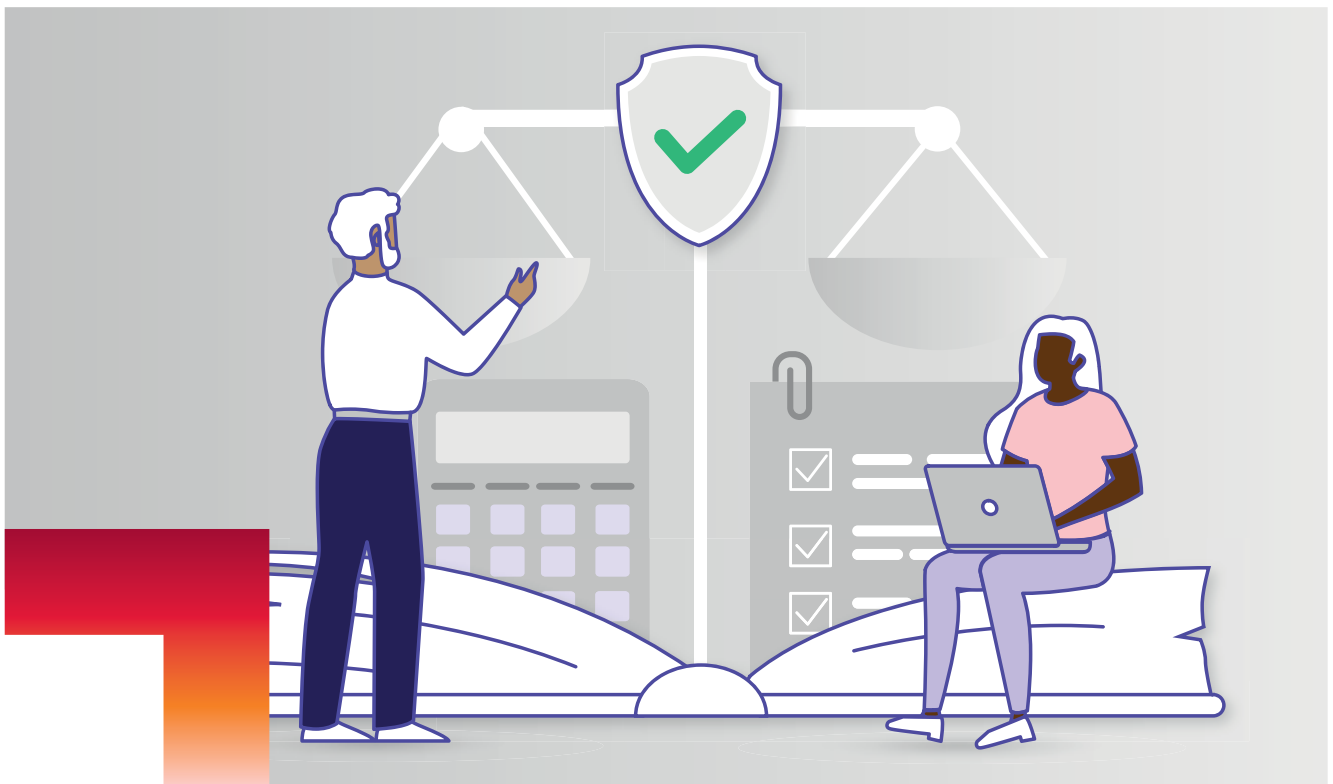
Social Value insights

CGI is an accredited Social Value Quality Mark (SVQM) organisation. We help assess key metrics and calculate the right value, gaining better insights to show where companies can do more, including reducing carbon footprint, supporting youth skills development, investing in local economies, and ensuring fair treatment for staff.

Through our Social Value calculator, which follows the themes, outcomes, measures (TOM) framework and has adopted over 400 plus proxy values, we are able to measure, track, report and assign the right social value to support different client needs.

Key outcomes

- 1 Enhanced transparency and accountability
- 2 Competitive advantage
- 3 Regulatory and compliance alignment
- 4 Stronger stakeholder engagement
- 5 Long-term business sustainability



Services and solutions

Bespoke Social Value reporting/accounting dashboards with advanced tooling

- Accurately measure and quantify social impact and demonstrate value to stakeholders and investors
- Equate the good you deliver to an estimated financial value 'Proxy Value', calculated in alignment with national Social Value standards (DEFRA, TOMs, HM Treasury Green Book, Social Value Quality Mark) through CGI's dashboard

Social Value strategy and materiality assessments with stakeholders

- Identify opportunities for ethical sourcing, fair labour practices, and improved supplier engagement
- Deliver a value chain social impact assessment
- Define data driven targets and goals
- Set Social Value key performance indicator (KPI) setting

Expert consultancy to achieve Social Value accreditations (e.g. Social Value Quality Mark)

- Strengthen reputation, improve market positioning, and enhance credibility with stakeholders
- Ensure consistency, transparency, and comparability in impact reporting, aligning with best practices

Socially responsible procurement

- Embed Social Value considerations into procurement decisions
- Drive responsible sourcing, enhance supplier diversity, and meet government and corporate ESG requirements



Sectors

Our services and solutions can be adapted and modified for any industry. For Social Value insights, we have strong expertise in delivering for government, local authorities, construction and the IT industry.

“CGI in the UK's silver accreditation showcases robust evidence and a genuine commitment to driving social value across its operations. We commend CGI for drawing on its core expertise as a tech consultancy to develop specific innovations that help unlock Social Value for all.”

Richard Dickins

Managing Director of
Social Value Quality Mark CIC



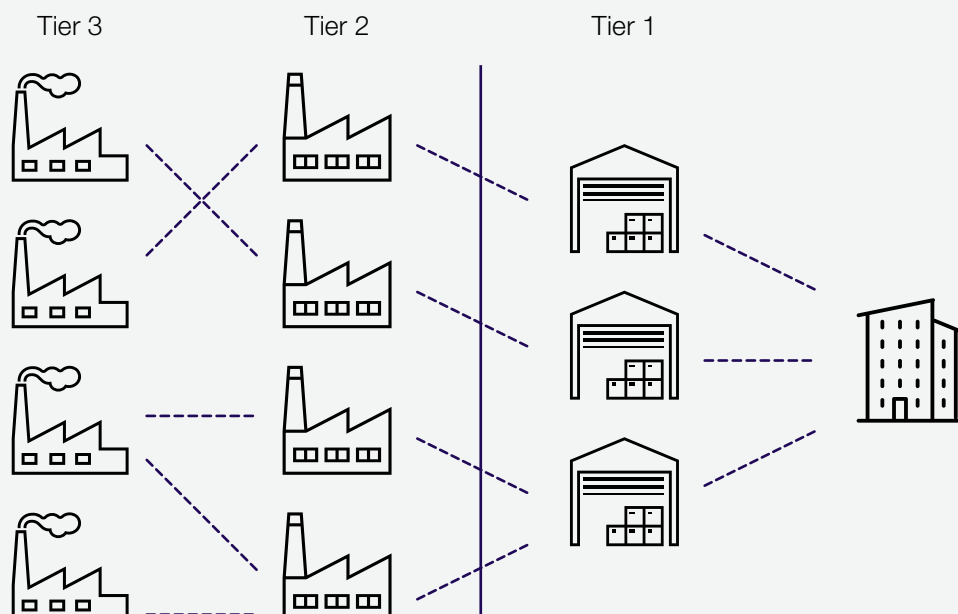
Advanced digital supply chain

Sustainability supply chain excellence puts your business ahead of the competition. Our goal is to help our clients minimise the negative environmental and social impacts associated with the production, transportation, and distribution of goods and services through increased transparency and robust supply chain due diligence.

Key outcomes

- 1 Enhanced transparency across supply chain tiers and ethical sourcing practices
- 2 Risks clearly identified, assessed and reported on
- 3 Robust due diligence to help mitigate against modern slavery and child labour within supply chains
- 4 Compliance with regulatory requirements

Multi-tier supply chain



Services and solutions

Supply chain reporting and risk assessments

- Identify and mitigate risks
- Enhance transparency and ethical sourcing practices
- Ensure compliance with regulatory requirements

Supply chain strategy development

- Set clear KPIs for ESG
- Align supply chain operations with business objectives and sustainability goals
- Enhance efficiency, resilience, and adaptability to market changes
- Drive long-term value creation through responsible sourcing and supplier engagement
- Establish strong policies and frameworks for ethical and sustainable supply chain management
- Embed sustainability principles into business operations, procurement and supply chain decision-making
- Enhance credibility for supply chain accreditations through expert consultancy

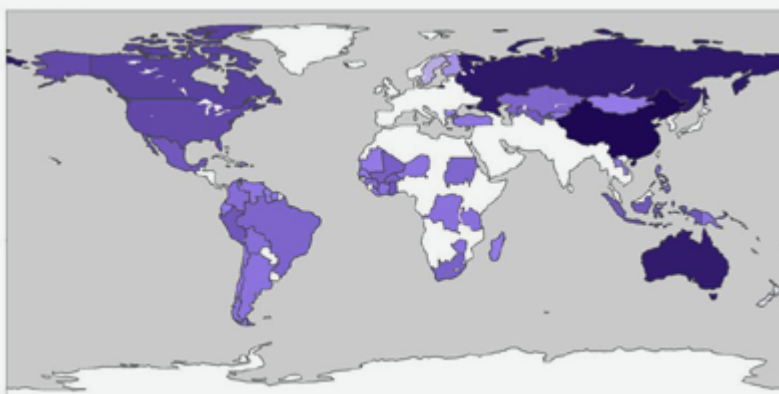
Critical minerals and supply chain mapping

- Digitally map supply chains to track critical minerals, materials, and key dependencies
- Overlay datasets to assess the intertwining nature and environmental and social risks
- Achieve full visibility of supply chains, including key materials and dependencies
- Strengthen risk management and responsible sourcing strategies
- Enhance credibility and market positioning through verified compliance

Sectors

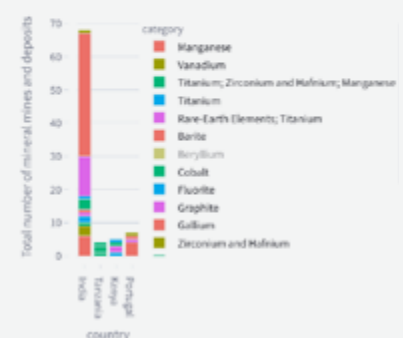
We work across all sectors and find that organisations with hardware components and material-based products make best use of our advanced digital supply chain solutions.

Global critical minerals map – gold production (tonnes)



Bar graph Info

Other critical minerals (2022)





“Building ethical, just, and environmentally responsible supply chains requires transparency, traceability, compliance, and proactive supplier engagement. CGI’s supply chain due diligence map empowers organisations like DMR Training to effortlessly enhance transparency, simplify compliance, and improve reporting across complex supply chains.”

Managing Director and Founder,

Dave and Radley

DMR Training and Consultancy



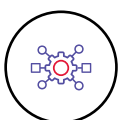
Sustainability innovation and development

An imperative for today's organisations is defining and achieving a successful sustainability strategy. Adoption of such a strategy must align with global efforts to mitigate and build resilience to climate change, and boost biodiversity.

CGI's flagship Sustainability Exploration Environmental Data Science (SEEDS) programme is designed to help organisations globally tackle complex sustainability challenges through cutting-edge technology, research, and innovation - achieving a better and more sustainable future for all.

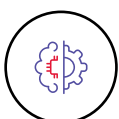


Two core areas of expertise:



Tech and IP development

- Design and develop new technologies, solutions and products tailored to sustainability challenges and needs
- Create intellectual property (IP) for innovative products and services



Research and innovation

- Explore emerging technologies to future-proof your organisation
- Support prototyping and early-stage innovation to bring ideas to market



Key outcomes

- | | |
|--|--|
| <div style="display: flex; align-items: center; margin-bottom: 10px;"> <div style="border: 1px solid #c00000; border-radius: 50%; width: 40px; height: 40px; display: flex; align-items: center; justify-content: center; margin-right: 10px;">1</div> <div>Fast-track the development of new technologies and solutions</div> </div> <div style="display: flex; align-items: center; margin-bottom: 10px;"> <div style="border: 1px solid #c00000; border-radius: 50%; width: 40px; height: 40px; display: flex; align-items: center; justify-content: center; margin-right: 10px;">2</div> <div>Enable early-stage prototyping and testing to refine ideas before full-scale implementation</div> </div> <div style="display: flex; align-items: center; margin-bottom: 10px;"> <div style="border: 1px solid #c00000; border-radius: 50%; width: 40px; height: 40px; display: flex; align-items: center; justify-content: center; margin-right: 10px;">3</div> <div>Conduct innovative research</div> </div> <div style="display: flex; align-items: center;"> <div style="border: 1px solid #c00000; border-radius: 50%; width: 40px; height: 40px; display: flex; align-items: center; justify-content: center; margin-right: 10px;">4</div> <div>Ensure future-proofing and competitive advantage</div> </div> | <div style="display: flex; align-items: center; margin-bottom: 10px;"> <div style="border: 1px solid #c00000; border-radius: 50%; width: 40px; height: 40px; display: flex; align-items: center; justify-content: center; margin-right: 10px;">5</div> <div>Leverage partnerships with academia and global institutions (e.g., the United Nations) for cutting-edge insights for our clients</div> </div> <div style="display: flex; align-items: center; margin-bottom: 10px;"> <div style="border: 1px solid #c00000; border-radius: 50%; width: 40px; height: 40px; display: flex; align-items: center; justify-content: center; margin-right: 10px;">6</div> <div>Ensure solutions are backed by the latest research and best practices</div> </div> <div style="display: flex; align-items: center;"> <div style="border: 1px solid #c00000; border-radius: 50%; width: 40px; height: 40px; display: flex; align-items: center; justify-content: center; margin-right: 10px;">7</div> <div>Develop solutions with tangible sustainability impact e.g. reducing waste and carbon footprints</div> </div> |
|--|--|

Services and solutions

- Innovation, prototyping and intellectual property (IP) Development
- Collaboration with academia and the United Nations
- Solutions for climate resilience, biodiversity, supply chain sustainability, and waste reduction

Client success story

From insights to strategic action, CGI's AI water pollution prediction solution

At CGI, we have developed a powerful artificial intelligence (AI) tool that can help organisations predict water pollution events, paving the way for a cleaner and healthier environment. This innovative solution accurately predicts point source pollution with 91.5% accuracy and non-point source (NPS) pollution with 73% accuracy, empowering proactive mitigation strategies, and safeguarding our waterways and supplies.

By analysing a vast array of datasets, from geospatial information to timeseries, the AI tool identifies areas conducive to pollution. By implementing mitigation measures over resilience, we can significantly reduce the risk of social and environmental damage such as dead zones.

Previously trialled in the North Devon UNESCO Biosphere Reserve, and working with several SEEDS partners (Ordnance Survey and WATR), CGI's AI water pollution prediction tool is demonstrating its potential to transform water quality management practices. By providing actionable insights to local stakeholders, the solution will pave the way towards achieving the biosphere's, and other key stakeholders in the water sector's ambitious water quality targets.

This AI-driven approach marks a shift in water management practices, moving from reactive adaptation to proactive mitigation. Key stakeholders can understand where the pollution will occur, and then using statistical analysis, confidently take measures to prevent the pollution from occurring in that location again.

By empowering proactive pollution mitigation strategies, we are protecting biodiversity and public health.

To explore our CGI SEEDS programme or see more case studies, please go to cgi.com/uk/SEEDS

“For academics, it’s fundamental to have collaboration with industry. Too often, we’ve seen academics developing fantastic new tools, but they’ve remained in the lab. Whereas if we can do the knowledge transfer, then we can allow the impact. We can allow industry to use what we develop and to move on. This bridge is really fundamental, and what SEEDS is trying to achieve. It’s doing really well so far, so I’m really happy.”

Professor Sebastian Farnaud

Professor of Enterprise and Innovation in
Healthcare Technologies, Coventry University





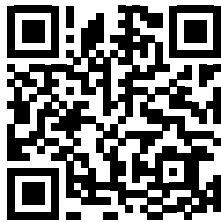
Our technology and tools are helping clients globally achieve a better and more sustainable future for all.

To find out more about sustainability at CGI and how we can help your organisation, go to

Email us at



Or visit



About CGI

Insights you can act on

Founded in 1976, CGI is among the largest IT and business consulting services firms in the world.

We are insights-driven and outcomes-focused to help accelerate returns on your investments. Across hundreds of locations worldwide, we provide comprehensive, scalable and sustainable IT and business consulting services that are informed globally and delivered locally.

cgi.com/uk

