

Unlocking energy insights from smart meter technology





The challenges faced by innovators

The use cases for accessing data from Great Britain's ever-growing population of smart meters are wide and varied. However, innovators are faced with technical and economic barriers when seeking access to this data. The traditional route has required organisations to become an accredited market participant authorised to interact with the Data Communications Company (DCC), which is a significant investment.

A turnkey service for smart meter data access

CGI WiseWatt provides a turnkey ability for any organisation to directly access smart meter data from the tens of millions of smart meters installed in properties across Great Britain, agnostic of the energy supplier.

As a fully accredited DCC User authorised to provide managed services to third parties, our secure, scalable, cloud-based service allows you to focus on building services and solutions that deliver insights from energy. Key features of CGI WiseWatt include:

Open APIs	Consent Management	Sandbox API	Cloud-native
			
Open APIs for capture of energy usage data and handling of consent from consumers	Consent portal for consumers for verification and consent provision	Sandbox API so you can try before you buy	Built natively in the cloud , delivering scalability and high performance
<ul style="list-style-type: none">• Pull historic electricity and gas consumption data• Set up schedules for on-going collection• Consumer consent and verification	<ul style="list-style-type: none">• Portal or APIs for integration to your own portal• In-Home Display (IHD) verification• Ad-hoc and automated consent revocation	<ul style="list-style-type: none">• Simplified onboarding• Open API documentation• Test integration before you sign up	<ul style="list-style-type: none">• Microservices• API Management• Scalability• High performance

Access to insight

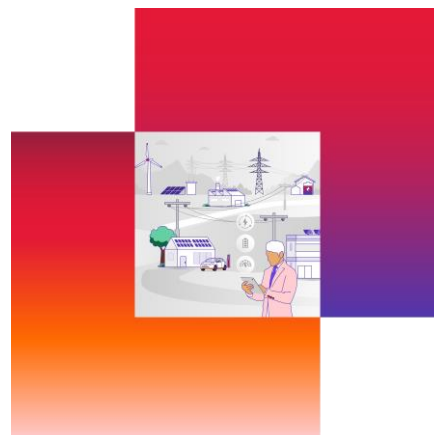
A wide range of data can be obtained through the service, including:

- Energy usage: electricity (watt hours) and gas (cubic metres) at both daily and half-hourly intervals
- Exported electricity at half-hourly intervals
- Smart meter details (e.g. firmware info, manufacturer/model info)
- Tariff (e.g. standing charge, unit prices)

What our service provides

Our secure, scalable, cloud-based service includes:

- Simplified onboarding process, enabling rapid access
- A portal and APIs for consumer consent management and premise IHD verification
- Compelling pricing structure, incentivising innovation
- Open API documentation and sandbox API available for integration and demo before any commitment
- Support desk



CGI WiseWatt

APIs

- Pull energy data
- Consumer verification and consent opt-in
- Consent opt-out
- Maintain data schedules

Key features

- Open APIs
- Consent management
- Sandbox API
- Cloud-native
- High performance and availability

How is the service accessed?

CGI WiseWatt is accessible as cloud-based APIs (REST and in JSON format) over the Internet. Following simple sign up, you will be provided with a unique API key. The API key and open API documentation allows you to integrate to the APIs straight away to start obtaining consumer consent and subsequently pull energy data.

What are the use cases?

CGI WiseWatt can be integrated with solutions and services aiming to harness the power of the data being captured by the tens of millions of smart meters in Great Britain. Use cases include:

- Renewable energy and demand forecasting
- Energy tariff comparison
- Energy usage insights and analysis
- Monitoring, fault detection, and predictive maintenance

Services that could be provided include:

- Mobile and web applications to provide energy services to consumers and SMEs
- IoT / sensor platforms
- Open energy data repositories
- Data collection and aggregation

How CGI can help

We can help you harness the data provided by our service with:

- Data science and analytics
- Artificial Intelligence and Machine Learning (AI/ML)
- Web and mobile application development
- Data storage and hosting
- Data structure and data model

Pricing

We provide a simple menu pricing structure that scales with volume.

[Contact us](#) for more information on pricing, including tailored pricing, and to sign up to CGI WiseWatt.

To learn more about CGI WiseWatt visit our [web page](#).

“Unlocking energy insights from smart meter technology”

About CGI

Founded in 1976, CGI is among the largest IT and business consulting services firms in the world. We are insights-driven and outcomes-based to help accelerate returns on your investments.

In the Utilities industry, we have more than 6,000 experts worldwide supporting end to end production, distribution and central markets across Europe and North America. As the utilities world continues to evolve rapidly to adapt to changing market demands, we help suppliers move to new business models, modernise legacy IT environments, increase security, and become more customer-centric.

For more information

Visit cgi.com/uk