



# CGI AgileUnity

## Agile Digital Services

Dial up the ambition, dial down the risk with our flexible delivery portal that adds transparency and confidence to your Agile projects



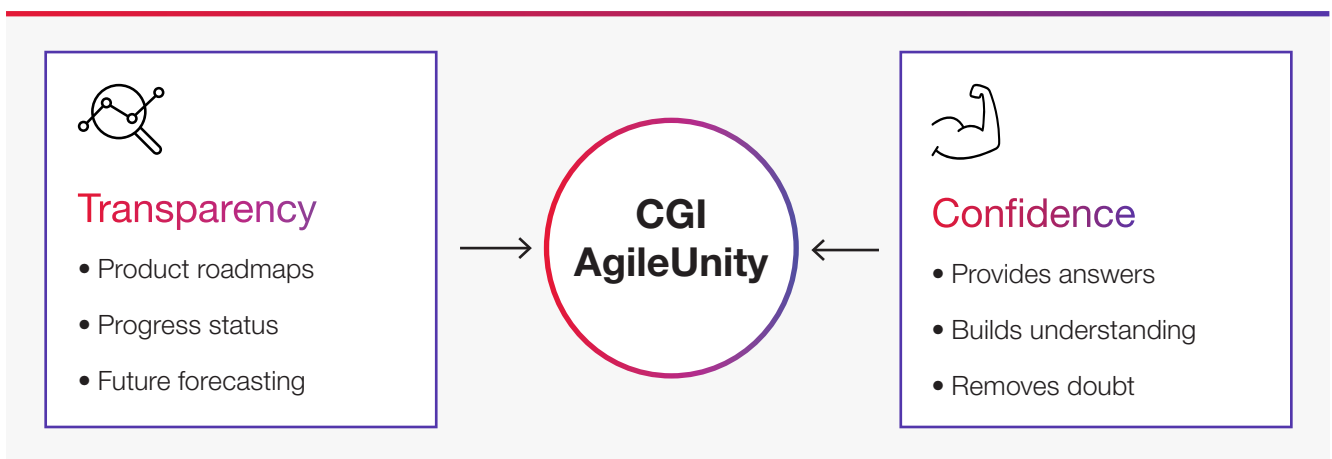
# Adding clarity to Agile



CGI AgileUnity is a delivery portal designed to work with any Agile managed delivery, offering clarity regardless of product sector, scale or complexity.

It enables Agile delivery teams and clients to see clear product roadmaps, progress status and future forecasting.

The portal scrubs out common doubts about Agile, providing reassurance and building understanding and confidence when product development is underway.



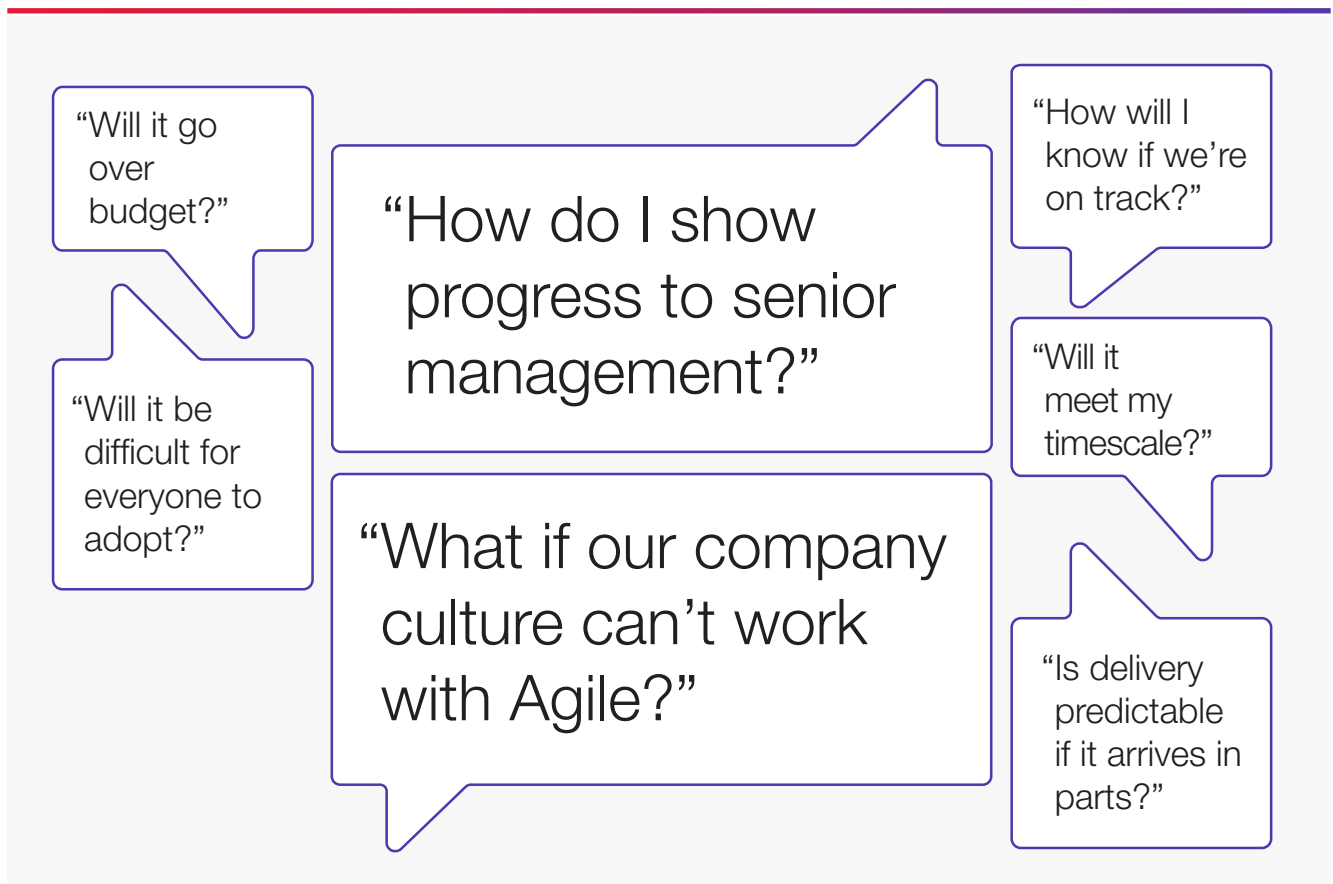
# Removing Doubt

## Exceeded budgets, responsibility confusion, unrealistic expectations, lack of predictability

There are lots of reasons, real and imagined, fuelling resistance to Agile. Most stem from a lack of objective measures for progress and planning.

CGI AgileUnity fills this gap, providing operational, quality and value metrics that support better delivery predictions and forecasts, and transparent data that is visible to everyone at any time.

It allows teams to reassure clients and answers many of the questions that some clients carry over from unsuccessful experiences with Agile:



If these are familiar questions, CGI AgileUnity can give you the transparency and reassurance you need to begin your collaborative Agile adventure with trust and confidence.

# As easy as 1, 2, 3...

For those used to straightforward beginnings and ends, Agile activity can seem hard to pin down. It's a dynamic method that requires a shift in approach and skills. This is where CGI AgileUnity comes in.

1

## See the plan

Your product roadmap is kept in step with reality, so you can keep a wider view.

2

## Track the progress

As you work through iterations, pipeline test results are matched against functionality definitions, and performance metrics are generated.

3

## Forecast the future

Comparative metrics and team flow data can be used to refine and forecast future work and delivery timetables.

CGI AgileUnity gives a three-in-one view for following each segment of work, tracking overall product progress and providing metrics for future planning.

It adds an invaluable communication tool that marries the flexible, iterative culture of Agile with solid metrics that substantiate product progress.

It's great for reporting, and even better for inspiring the teams that provide its data.

# How it works

CGI AgileUnity displays a clear, single-pane summary of your product delivery, with no re-keying. It uses data from your Work Management system to ensure that the reality it reflects is the one that you are creating.

Distilling your work allows you to evaluate as you deliver and improve continuously throughout the project.

A product dashboard puts all the top line details (goals, latest stories, feature progress) in one place and links through to more detail on your:



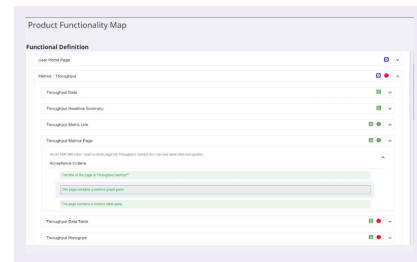
## Roadmap

Clarified with iteration progress, completion and backlog status.



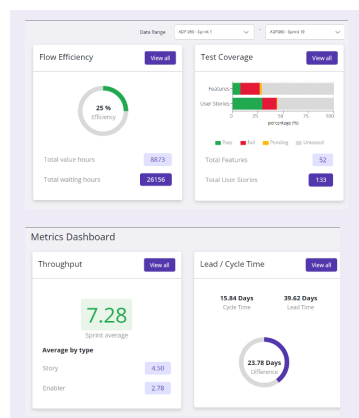
## Functionality map

With definitions and acceptance criteria mapped against test results, giving quality oversight.



## Metrics

From flow efficiency, to lead and cycle times, performance can be evaluated and data used to refine planning for future iterations.



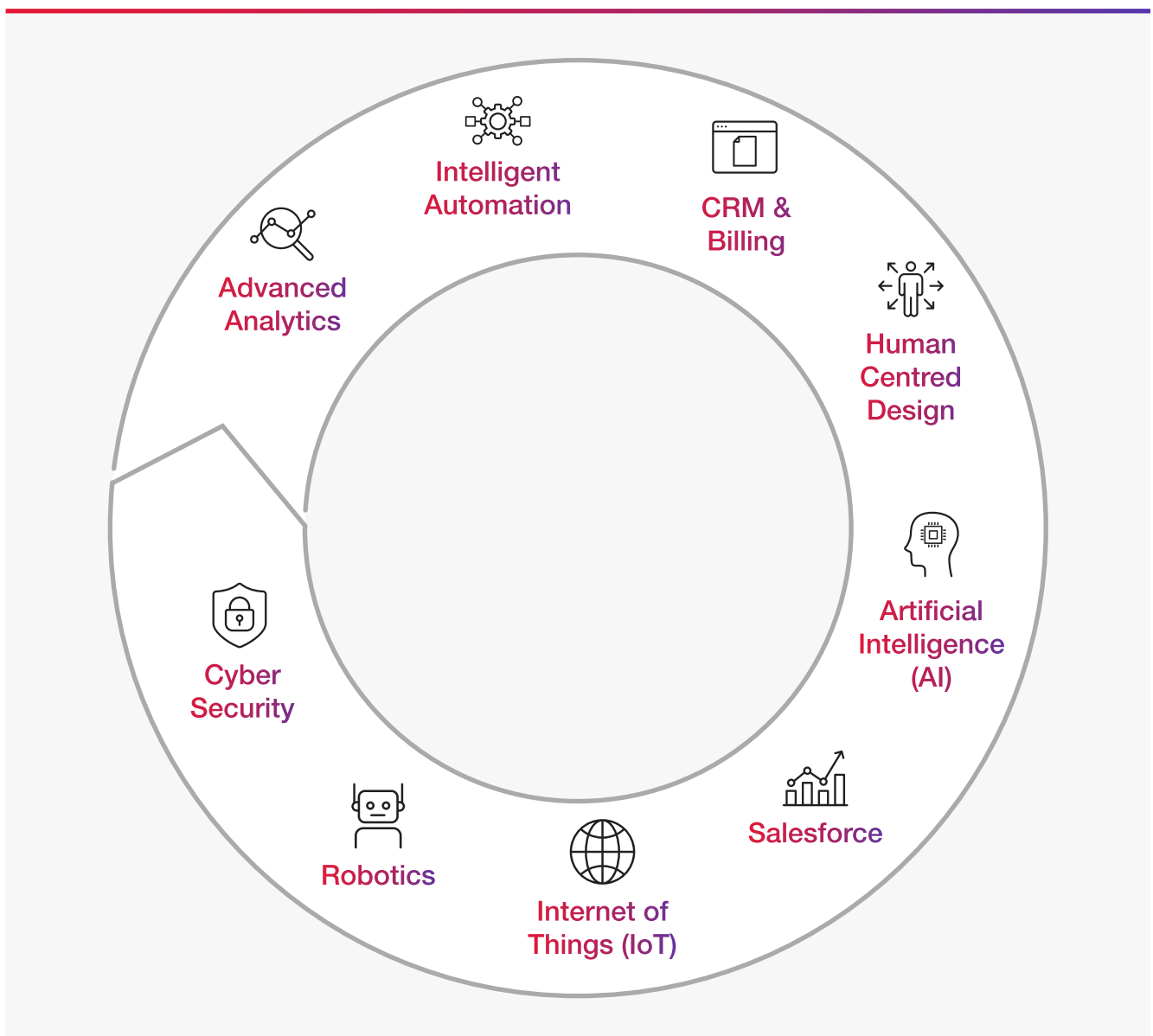
## Forecasting

A tool that uses your team's previous performance metrics to generate more accurate forecasts for upcoming work

# Unlimited Applications

CGI AgileUnity integrates fully with Work Management Systems and is designed to work with any Agile managed delivery

CGI AgileUnity can be applied alongside implementing and adopting specialisms such as:



# People behind the portal



CGI AgileUnity has been developed by our Agile Digital Services team, which brings together the brightest Agile minds to deliver unrivalled expertise for our clients.

CGI Agile Digital Services supports organisations who need to up their Agile game in order to realise their digital transformation ambitions.

Our cross-functional Agile Squads and coaches work collaboratively, supplementing and training your in-house teams.

1<sup>st</sup>



Global Transformation Partner in the world for Scaled Agile Framework (SAFe).

1,500<sup>+</sup>

SCRUM teams launched in the past 2 years large-scale.

15<sup>+</sup>

Agile transformations in 3 years.



## Start-up Agile

Introducing and proving the value of Agile practices.



## Add Agile

Integrating with in-house teams to help transformation delivery.

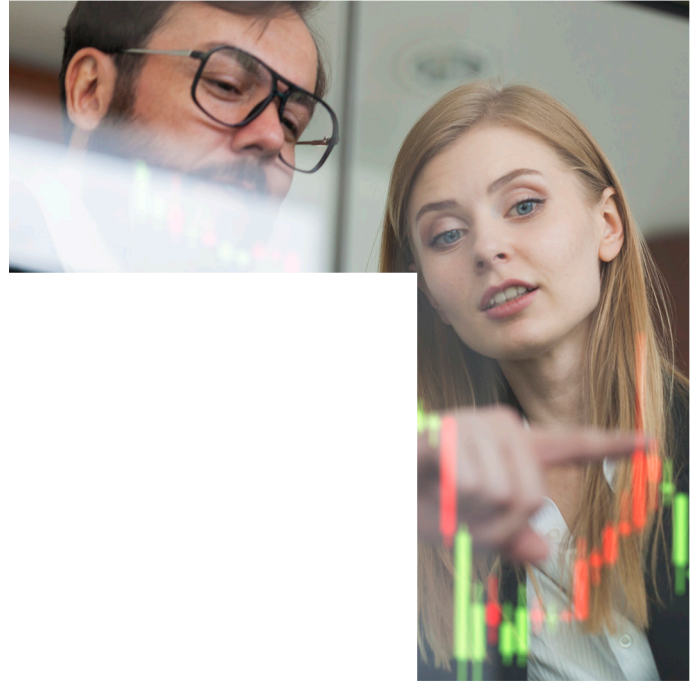


## Coach Agile

Expert training across a range of specialisms to meet specific needs.



Get in touch today to find out how we can help you to deliver better products, faster, by deploying effective and rapidly applied technology, and increasing organisational agility.



 [cgi.com/uk/agile-digital-services](https://cgi.com/uk/agile-digital-services)

 [ads.uk@cgi.com](mailto:ads.uk@cgi.com)

## About CGI

### Insights you can act on

Founded in 1976, CGI is among the largest IT and business consulting services firms in the world.

We are insights-driven and outcomes-based to help accelerate returns on your investments. Across 21 industry sectors in 400 locations worldwide, our 90,000 professionals provide comprehensive, scalable and sustainable IT and business consulting services that are informed globally and delivered locally.

 [cgi.com/uk](https://cgi.com/uk)

 [enquiry.uk@cgi.com](mailto:enquiry.uk@cgi.com)

