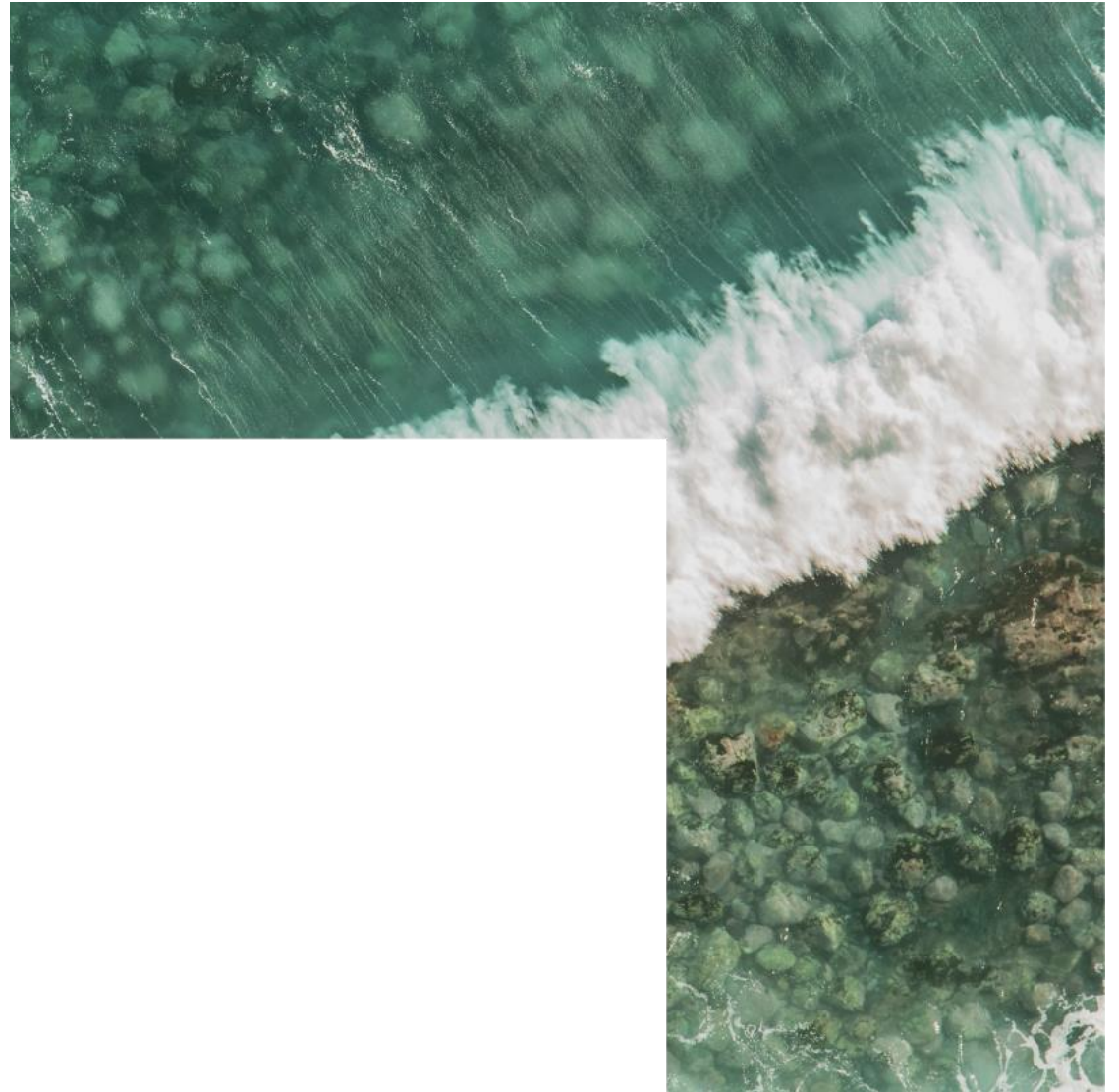


**Got environmental,  
social and governance  
(ESG) data?**

# Addressing ESG data challenges

Global banking webinar series  
November 16, 2022

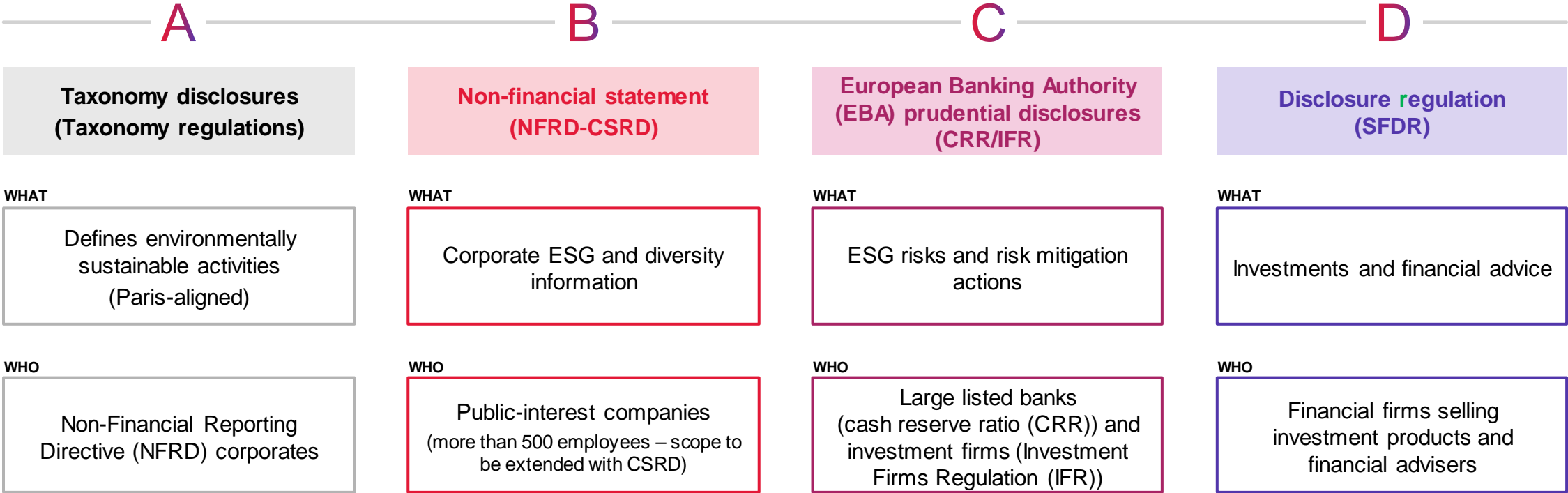


# The ESG data challenges and practices in Europe

# ESG means products, processes and new mandatory reporting for financial institutions

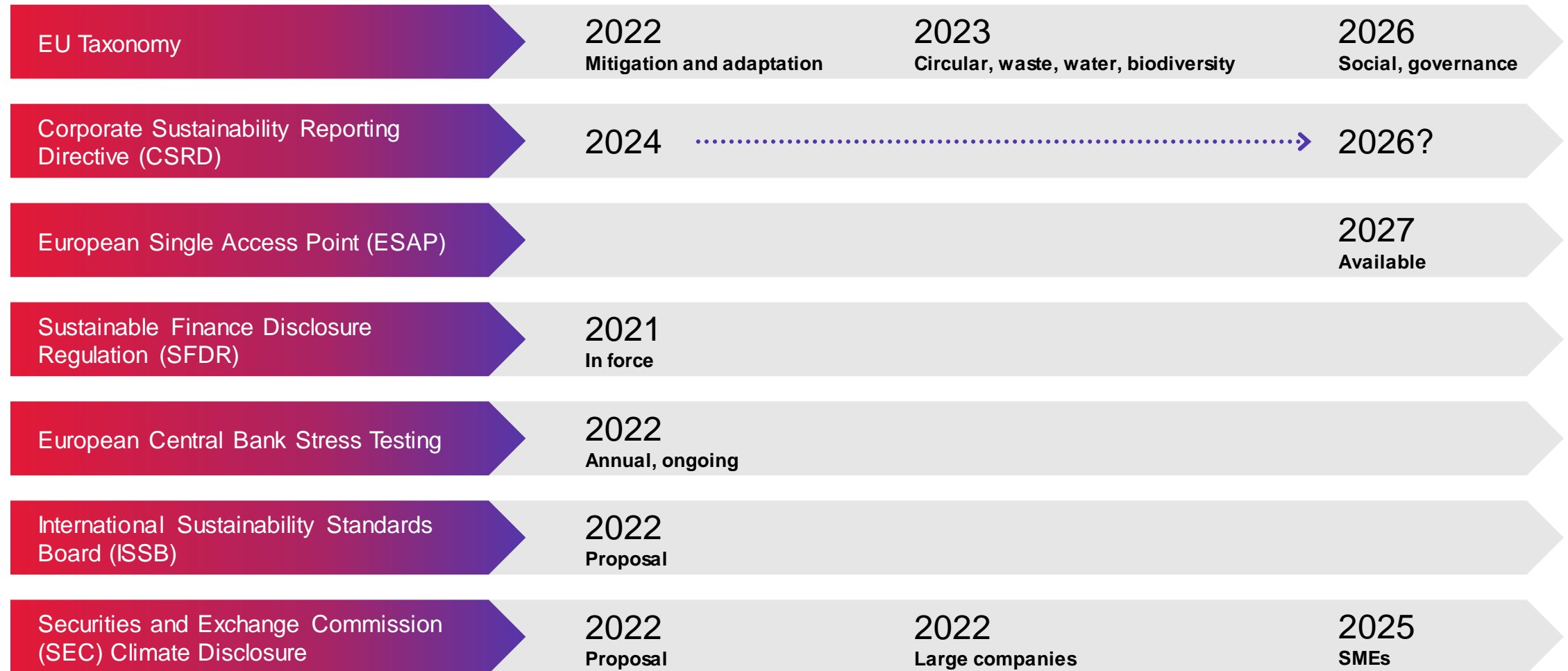
**ESG disclosure obligation in the European Union (EU) relevant for institutions**  
Financial Stability Board - Task Force on Climate-related Financial Disclosures (FSB-TCFD) recommendations

**EU Taxonomy and transparency: Key pillars to support the European Green Deal**

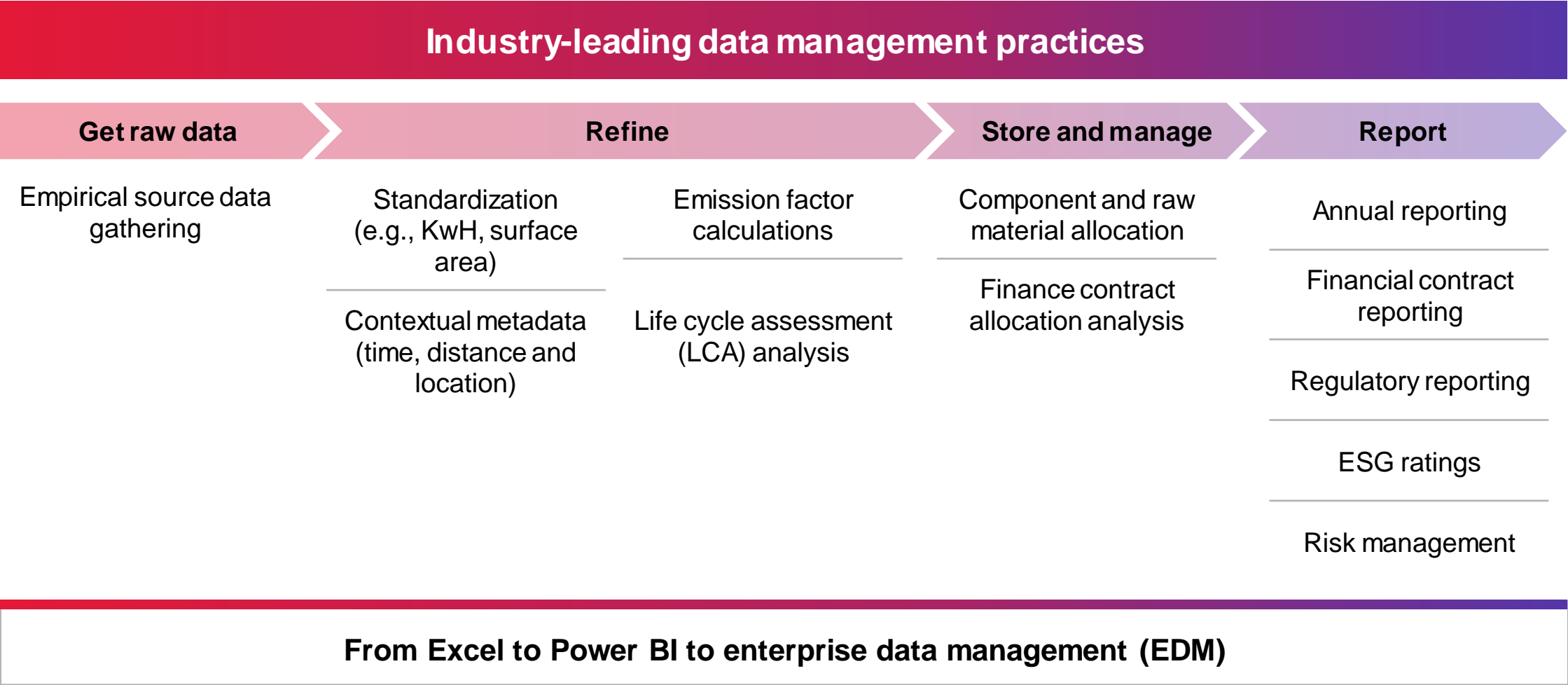


## European regulation

We know it will be in law, but when? Anyway, two years is short time

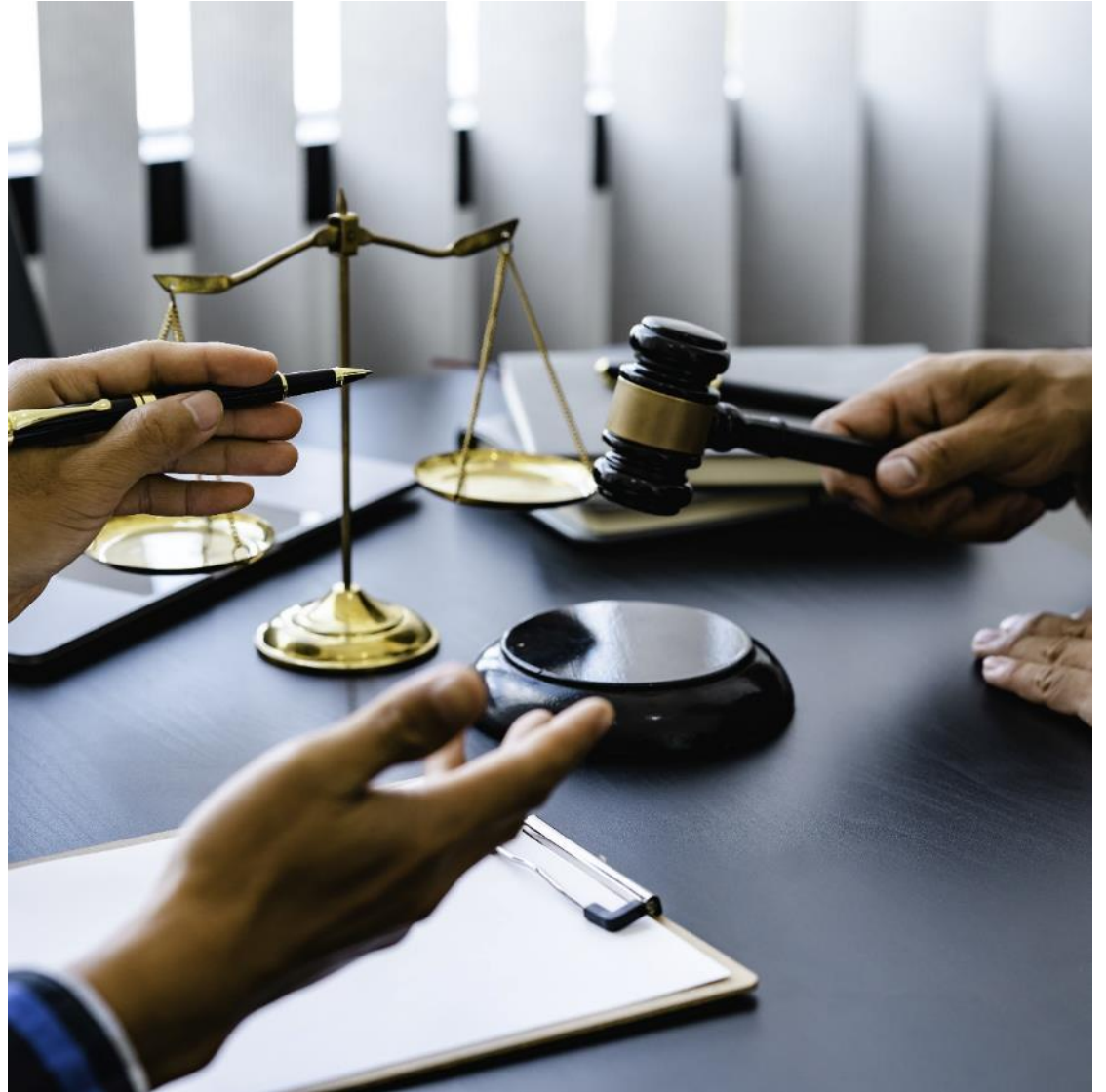


# ESG reporting is basically data management practice



# The ESG data challenges and practices in United States (U.S.) and Canada

# U.S. and Canada **regulations**





# Sustainable finance





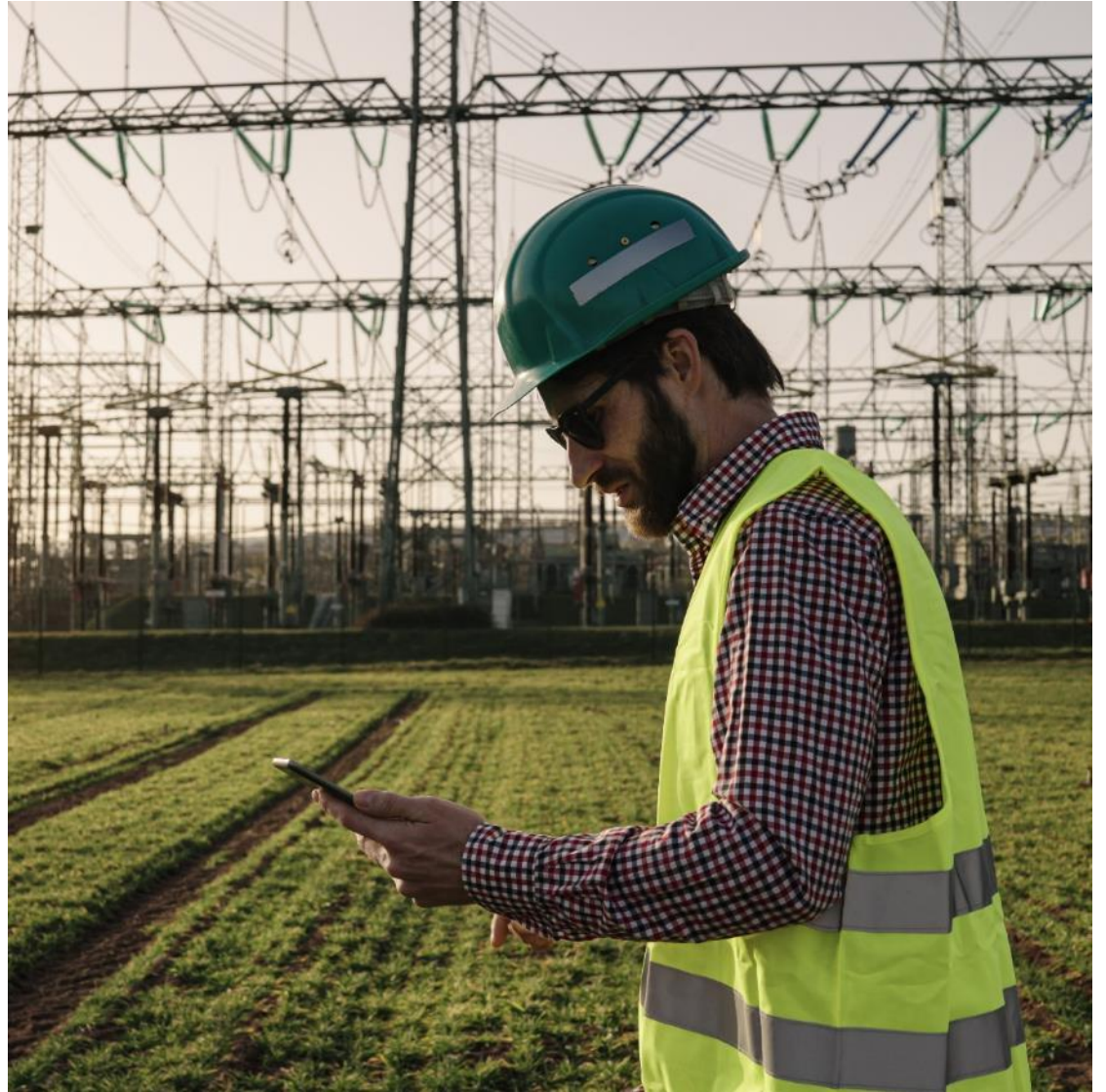
# CGI's best practice to address the data challenge

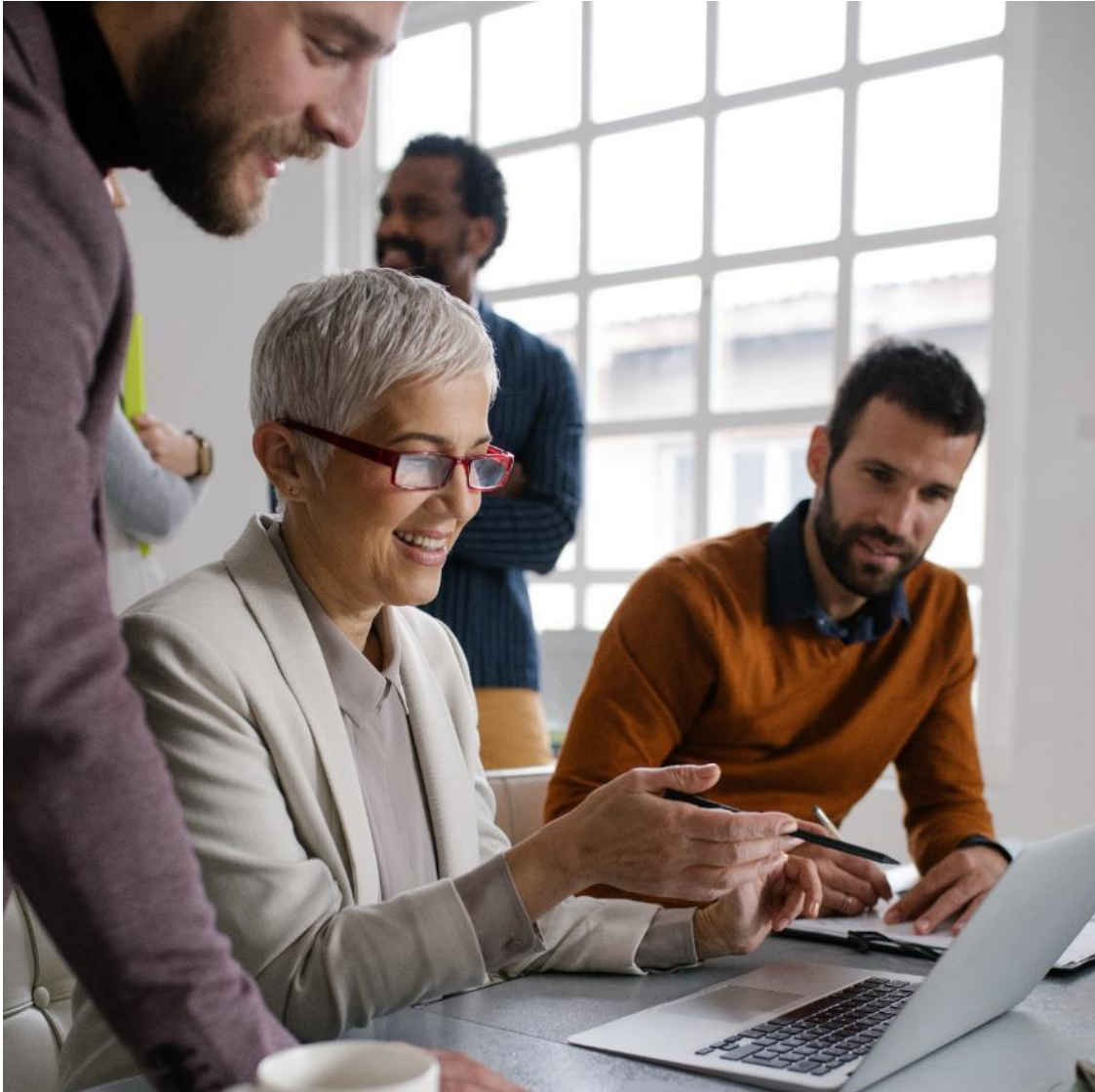


How can a company  
start to prepare when  
legislation is not  
finalized and is  
constantly changing?



We have a platform that is designed for changes. So that you don't risk default on requirements. You can start the process now.





## CGI AgileDX-Sustainability:

Secure exchange and management of critical environmental, social and governance information, enabling scaling collaboration.

# CGI's end-to-end Sustainability Data Management Consulting



## **ESG Data Strategy and Governance**

We advise and help clients set definitions and standards on the road to effective automation.



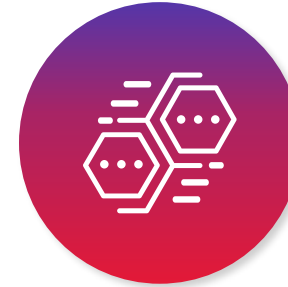
## **ESG Data Discovery Gap Analysis**

Beyond the accounting requirements, we investigate the possibilities in your data streams



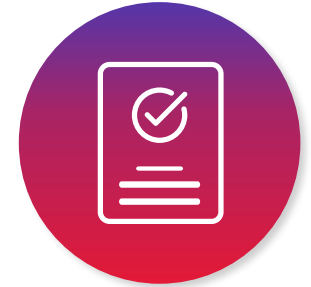
## **AgileDX-S Integration**

We perform the change management and strategy needed to connect IT/OT across the value chain.



## **ESG Data Sourcing, Capture, and extract, transform and load (ETL)**

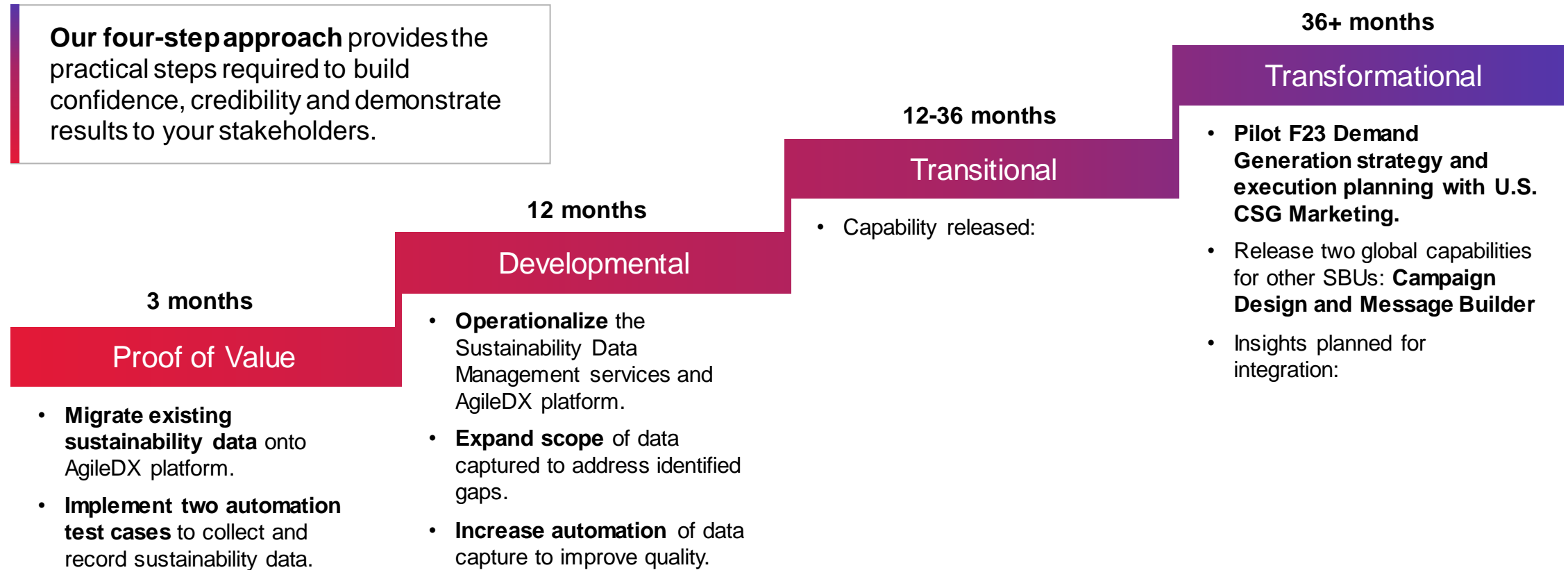
From space satellite data to external hubs, we help our clients find missing critical information.



## **ESG Analytics, Insights, Reporting**

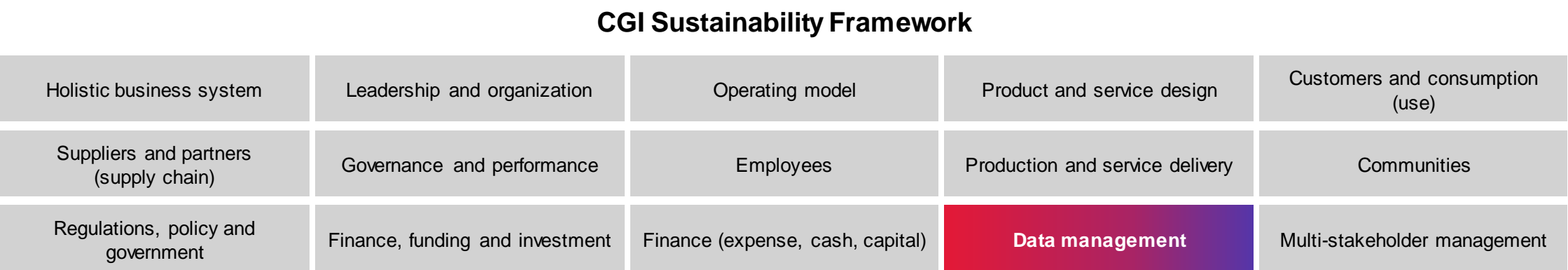
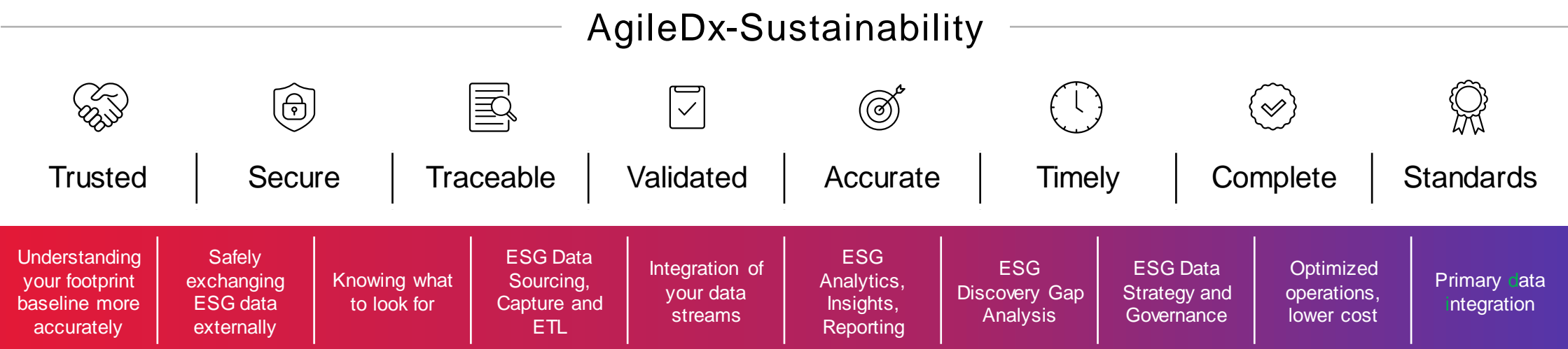
We build modern data capabilities, responsible use of data science and AI, driving productivity and experience with intelligent automation.

# Our four-step approach



Evolving the organization's capability to manage sustainability data in line with evolving standards, stakeholder and market needs

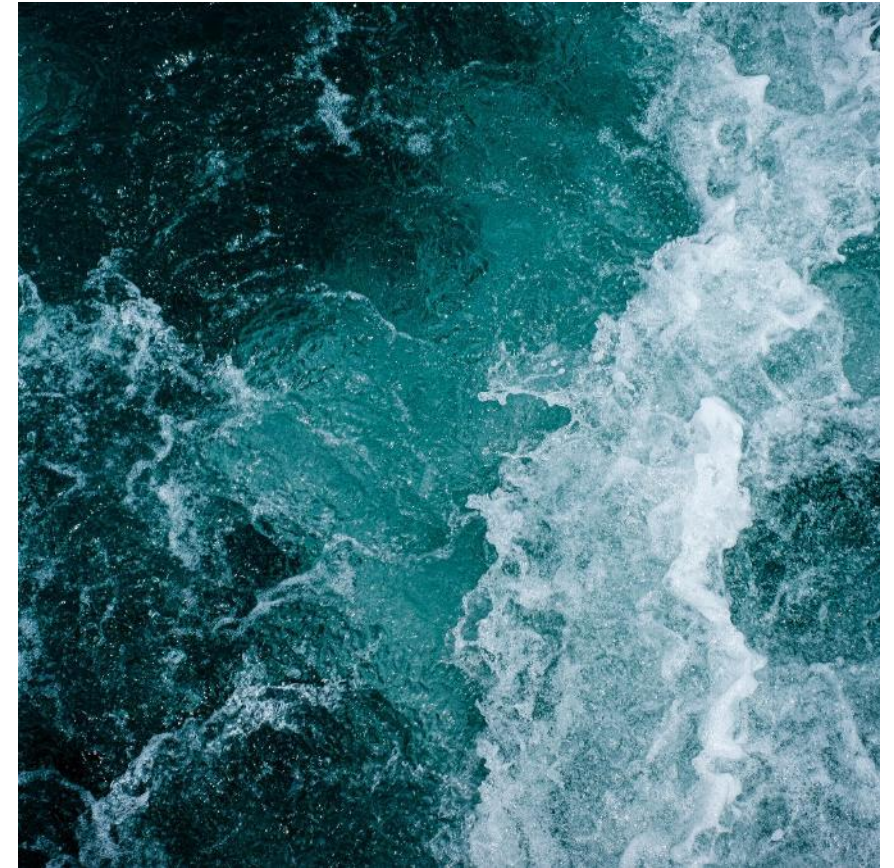
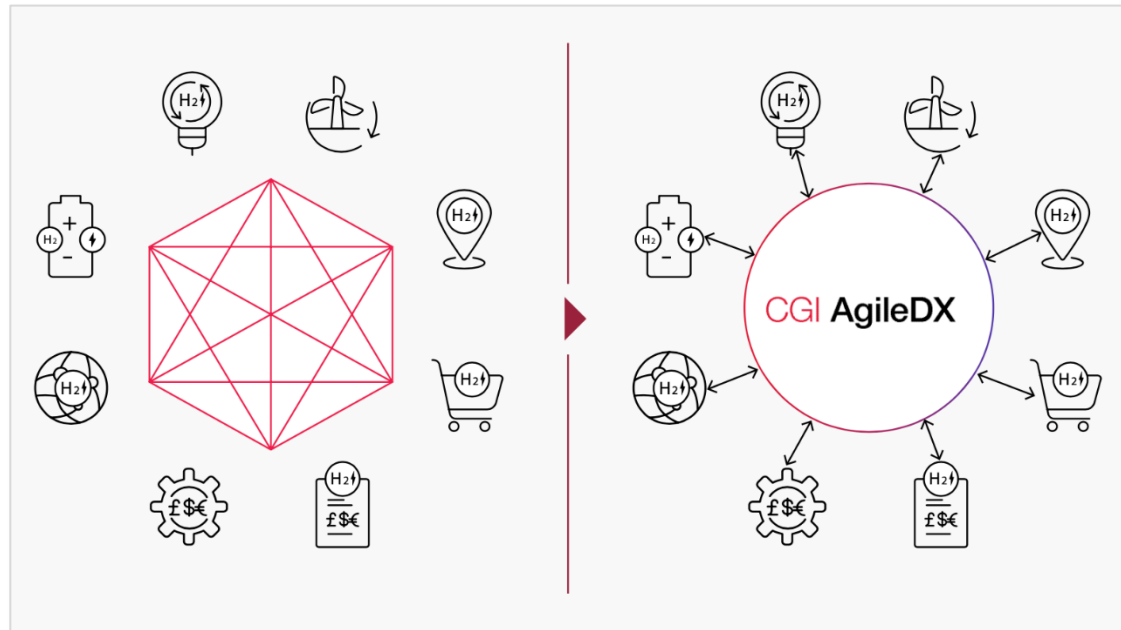
# Managing your sustainability data across the value chain





# Taking your sustainability journey to the next level with **CGI AgileDX-Sustainability**

Optimization of big data exchange  
Over **15 million secure** exchange transactions daily  
in **14** market systems-across **10** countries.



(Continued)



**Industry templates**

Best practices in business data modeling



**Shared ecosystem**

Integrated by design



**Operational readiness**

Ready and adaptable without coding



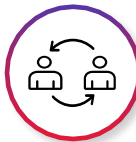
**Security by design**

Watertight, traceable and real-time visibility



**Lower costs**

Decreased cost of adaptation and deployment



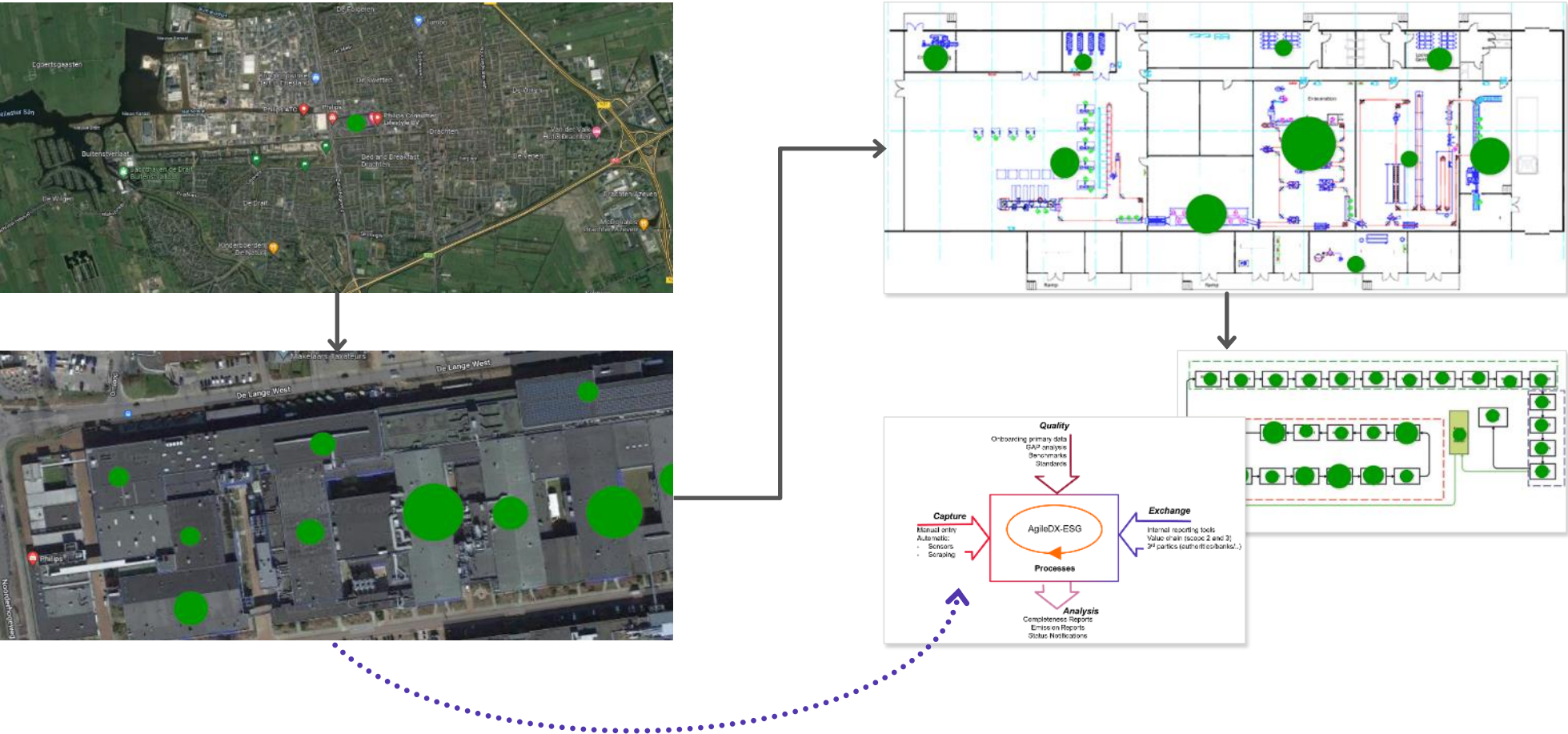
**Lifecycle management**

Continuous development and improvement





# Energy monitoring



# Next steps

We have developed a practical way forward:

## **Find out more**

Schedule an executive presentation and see a live demonstration of the tool.

## **Arrange a Proof of Value**

This is a three-month exercise where we demonstrate how we can manage your sustainability data in the platform. We will also identify two automation cases and run our Sustainability Maturity Assessment.

## **Implement your new roadmap**

With the confirmed Proof of Value and results of the Sustainability Maturity Assessment, a roadmap can be produced providing you a way forward.



# Further insights and contacts

Solution: [CGI AgileDX](#) - an operational-ready, intelligent data exchange platform



If you would like to discuss this topic in more detail, please contact any of the CGI presenters:

[satu.kiiski@cgi.com](mailto:satu.kiiski@cgi.com)

Global banking

[atso.andersen@cgi.com](mailto:atso.andersen@cgi.com)

ESG data challenges and practices in Europe

[matthew.Ayearst@cgi.com](mailto:matthew.Ayearst@cgi.com)

ESG data challenges and practices in United States and Canada

[nicole.zethelius@cgi.com](mailto:nicole.zethelius@cgi.com)

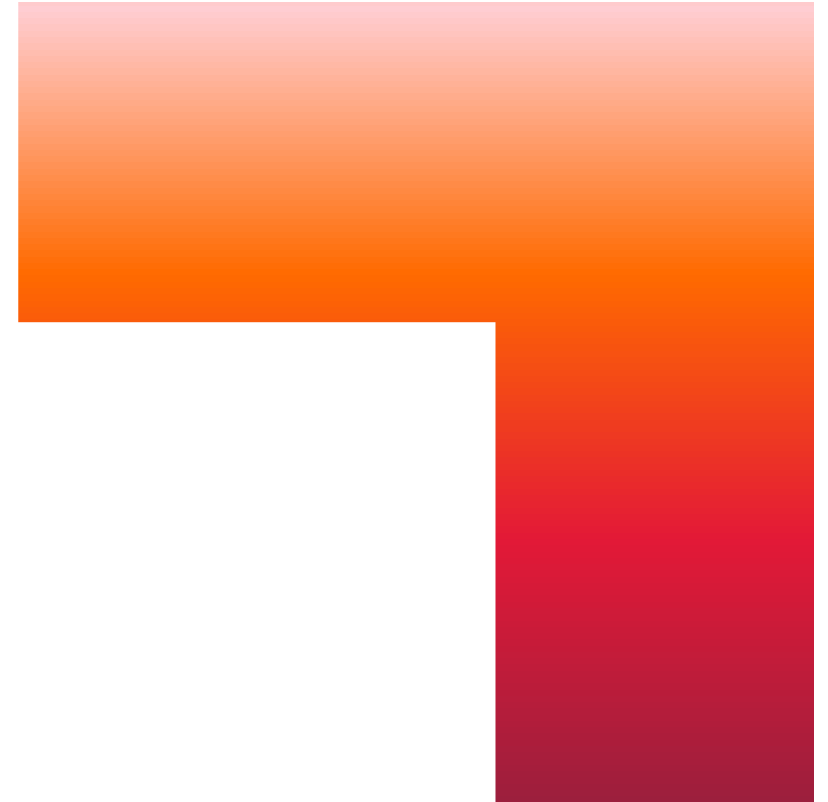
CGI's best practice to address the data challenge

# Insights you can act on

Founded in 1976, CGI is among the largest IT and business consulting services firms in the world.

We are insights-driven and outcomes-based to help accelerate returns on your investments. Across hundreds of locations worldwide, we provide comprehensive, scalable and sustainable IT and business consulting services that are informed globally and delivered locally.

**[cgi.com](https://cgi.com)**



**CGI**