

CGI TestSavvy enables agile development practices



Agile software development requires agile testing practices and tools that support them. Testers often find it hard to keep up to the ever-increasing pace of delivering value to clients, and software quality can suffer. CGI TestSavvy simplifies the complex and gives your team an advantage in using agile development practices on your journey to achieving digital transformation.

CGI TestSavvy offers a unique approach to test automation

CGI TestSavvy contributes to software quality by enabling testers to work more efficiently in the following ways:

Empowers testers to automate tests

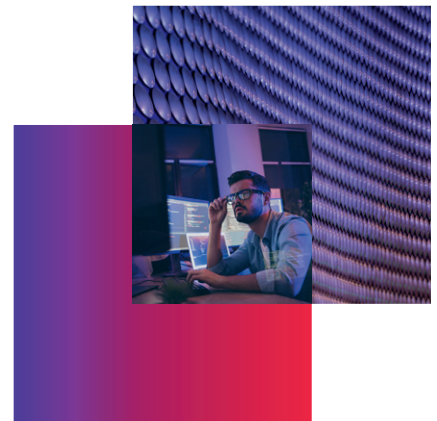
CGI TestSavvy provides a simple, graphical user interface where testers can follow a onestep process of writing test cases in a tool that also automates them. No more two-step process of testers writing manual test cases and then waiting for automators to have time to automate them. Testers use TestSavvy building blocks to create the automation without having to know coding or scripting.

Shifts testing left

CGI TestSavvy allows testers and business analysts to set up automated tests during the design phase, before the application under test is available.

Overcomes difficult to automate applications

CGI TestSavvy works with multiple test engines, such as MicroFocus UFT and Selenium WebDriver, and has its own TestSavvy Automate engine. This flexibility of test engines allows testers to automate applications that can't be automated with traditional automation tools.



Summary

CGI TestSavvy is an intellectual property product that transforms manual testers into automation experts – resulting in reduced test timeframes and increased test coverage.

Instead of writing scripts for a testing engine, such as MicroFocus UFT or Selenium WebDriver, testers and business analysts can use the TestSavvy graphical user interface to easily create automated test cases and manage test data. If you have already invested in test automation, CGI TestSavvy can also link to existing scripts created by automators.

CGI TestSavvy can be leveraged by CGI internal projects or external clients utilizing CGI testing services.

Allows data flexibility

Testers can handle complex data scenarios by creating datasets within CGI TestSavvy, querying data from databases or spreadsheets, and generating dynamic data.

Keeps automated regression tests current

CGI TestSavvy allows testers to quickly and easily maintain automated tests when the application changes with single points of maintenance and TestSavvy Autosync. Update an element in one place, and all related tests are automatically updated. This helps keep the automated regression test suite in optimal condition and ready to support continuous testing and releases on demand.

Executes tests efficiently

CGI TestSavvy provides many options for scheduled or on-demand automated test execution across multiple virtual execution machines, and TestSavvy execution reports provide fully detailed test results with screenshots, which is a tedious and time-consuming task for testers. These remote, unattended test machines allow testers to focus on high-value exploratory and deep-dive testing, instead of tying up their own computers with automated executions.

Integrates with DevOps tools

CGI TestSavvy easily integrates with DevOps tools, such as Jenkins and Azure ADO, so tests can be automatically executed with each code deployment during agile sprints.

Integrates with test management tools

CGI TestSavvy works with tools, such as Jira Xray and MicroFocus ALM, to provide detailed test status and transparency for stakeholders.

Reduces investment and ongoing costs

CGI TestSavvy automation streamlines the automation process that maximizes efficiency and productivity, lowers test tooling costs by 50 % or more by using test automation software licenses more efficiently, and allows less senior resources to rise to the automation challenge.

Built to succeed

CGI TestSavvy has been implemented in the banking, insurance, health, communications, finance, automotive, sales, and federal and state government sectors. Our clients have used CGI TestSavvy to automate testing for web applications, client-server applications, mainframe applications, web services (APIs), database testing, ETL testing, and cable TV boxes.

About CGI

Insights you can act on

Founded in 1976, CGI is now one of the world's largest IT and business consulting services firms.

We are insights-driven and outcomes-based to help accelerate the returns on your investments. Across hundreds of locations worldwide, we provide comprehensive, scalable and sustainable IT and business consulting services that are informed globally and delivered locally.

For more information:

info.de@cgi.com

www.cgi.com/de/life-sciences