

# Web-HMI



The MD100/300 range of devices can be enabled to provide an integrated and secure WEB Browser interface that delivers a flexible, contemporary and user friendly HMI to CGI RTU/SMS systems.

The CGI Web-HMI provides a flexible user-configurable interface with support for schematics, lists, trends, charts, alarms, record browsing, controls, archives, help and other customisable content.

The interface is event-driven over secure web sockets and provides real time visualisation of the MD100/300 system to the user.

The Web-HMI can be run from a Virtual Machine or from the CGI MD series range of SMS/RTU systems.

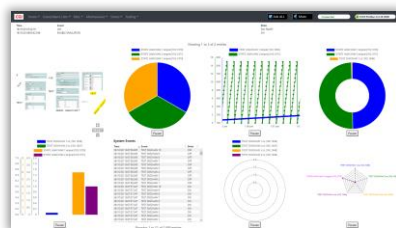
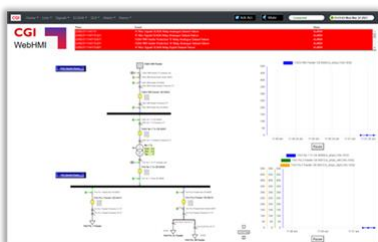
Reusable templates, symbols, and scripting tools allow rapid development and deployment of user interfaces.

The Web-HMI is fully integrated into the SMS/RTU database, which provides a significant advantage by eliminating the requirement for a separate HMI system to license, maintain or configure.

CGI's Web-HMI supports Chrome, Firefox and Edge browsers.

## Webserver

The Webserver is part of CGI's core MD software and is hosted on the nominated physical or virtual device (with redundancy if required). The webserver can be enabled in the same instance as an active gateway or processing node, or as a standalone Web-HMI node on a separate physical or virtual node.



- Multi-browser support: Chrome, Firefox and Edge
- Professional grade vector graphics software editor
- Low cost of ownership
- Effective replacement option for third party HMI solutions
- Totally integrated and contained in SMS/RTU database
- Cybersecurity enforcement via authentication, cryptography and encryption
- Secure Web socket interface
- Schematics, lists, charts, trends, browsers, archives, database views
- Event driven efficiency
- User defined page templates
- Symbol based drag and drop schematic build
- Automatic Schematic generation support
- Import schematics and libraries from CGI MOSAIC systems.
- Authenticate locally or via remote servers (LDAP, Kerberos, AD).
- Role Based Access Control

## Toolkit

Creation of menus, pages and content can be automated with scripting tools. The importing of schematics and libraries from CGI's MOSAIC SCADA system is supported.

The full function vector graphics editor (Inkscape<sup>1</sup>) is integrated into the tool chain to prepare the SVG based schematics. The operation of the editor provides all the features expected in modern professional drawing packages.

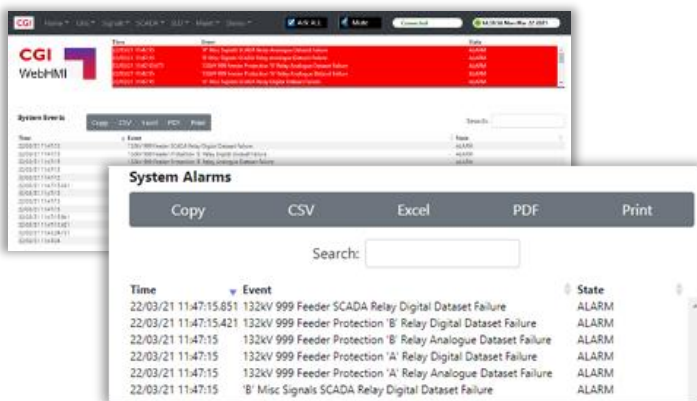
The reusable template structure and an integrated publish-subscribe mechanism allows pages with multiple content to provide context applicable/selectable data.

## Authentication

Authentication can be self-contained or configured to utilise corporate authentication services. For authorised users, control functions can be activated with logging and audit capabilities.

## Data

Data export functionality is provided with support for standard file formats such as CSV, Excel and PDF.



*CGI works collaboratively with our clients and is committed to the continuous improvement of the design and performance of CGI's products. While every effort is made to ensure the information provided in this brochure is accurate, specifications are subject to change without notice.*

## About CGI

Founded in 1976, CGI is among the largest IT and business consulting services firms in the world.

We are insights-driven and outcomes-based to help accelerate returns on your investments. Across hundreds of locations worldwide, we provide comprehensive, scalable and sustainable IT and business consulting services that are informed globally and delivered locally.

### For more information

Visit [cgi.com/au](http://cgi.com/au)

Email us at [sales.aus@cgi.com](mailto:sales.aus@cgi.com)

<sup>1</sup> Inkscape: <https://inkscape.org/>