

Empowered Learning Digital education transformation

Empower^{ed}
LEARNING by CGI

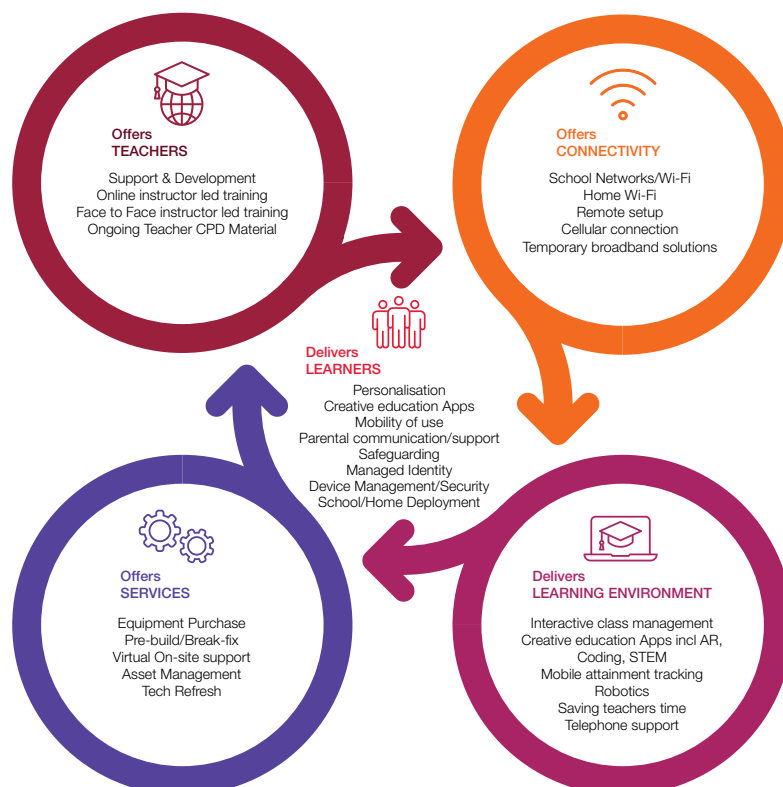
CGI

Delivering the future of education

What is Empowered Learning?

Empowered Learning is a digital transformation solution with clear and direct objectives: to raise attainment, support equity and inclusion and help prepare young people for a digital future. Empowered Learning unlocks the potential of both learners and teachers and enables them to realise their ambitions. The programme focusses on individual learning, while at the same time making education accessible to all and opening much wider curriculum opportunities for learners at all levels. Empowered Learning offers an extensive range of teaching options to ensure that inclusive, meaningful learning is available to all.

In support of our customers, and as part of the Empowered Learning solution, we co-create an education digital strategy business case and work together to build a programme plan covering key stakeholder communications, education related objectives and KPI's with a training and development plan for teachers focussed on digital learning skills and developing confidence. We evaluate and augment digital education devices and networks, identifying and adding best in class education applications to support teachers in the digital classroom environment. Ongoing CGI support, monitor and update the system for security and GDPR, ensuring users are safe-guarded online at school or home.



Why Empowered Learning?

Empowered Learning has a proven track record in delivering large scale, education transformation across a wide range of education providers. Working with our Local Authority partners, this solution has transformed the learning experience of over 60,000 learners and teachers across Scotland since 2018.

Empowered Learning continues to make a significant contribution to achieving CGI's shared vision with our customers - to raise attainment; reduce inequalities and improve opportunities and connectivity for young people. It ensures we equip learners with the tools they need to realise their potential and contribute to the wider economic and skills agenda for the future.

- **CGI's Empowered Learning improves equity of access** to the same great digital technology and tools for all learners. It includes accessibility features and focusses on creativity, personalisation, and collaboration. It is both engaging and aspirational, while ensuring young people have the skills required for the job and industries of the future e.g. STEM and Meta-Skills, building positive destinations for young people, ensuring their skills are matched with the wider economic strategy and skills demands of the future.
- **Enables teachers to open the door to a world of new opportunities and development** using the appropriate digital technology to support learning and teaching, building effective digital leadership teams and improving recruitment and retention of teachers by developing and training them in a cutting edge solution, whilst freeing up additional time to focus on teaching & learning.

CGI's Empowered Learning has an award winning partnership with Scottish Borders Council's Inspire Programme, LGC 2020 awards for the 'Future Places' and 'Private Partnership' categories.



Benefits

- **Strategy, objectives, implementation and support.** CGI will work with the local authority's team to review their digital education strategy and ensure that the benefits of the work undertaken to date, and future plans, are aligned to the achievement of the organisation goals and objectives. The joint team will plan and deliver the agreed programme of work, integrating work completed to date, and will ensure that deliverables are met on time and that the Empowered solution is fully supported on an ongoing basis.

- **Creates a learning environment,** which supports the digital learning of students driving high levels of creativity and personalisation, with the use of specialised education Apps and devices. Parents can access their children's schoolwork via Apps. Real-time feedback can be provided by teachers, focussed on supporting and raising attainment whilst supporting class management and time-saving for teachers is a key feature. Video feedback takes 1/10 of the time of written feedback and is a much more personalised approach.

- **Transforms the opportunities to learn anywhere with a more extensive curriculum.** A wider education curriculum can be developed with the ability to deliver lessons from anywhere to anyone, whilst also providing the access and benefits of a digital platform to the wider community citizens, schools, colleges, and apprenticeship modules. Empowered Learning supports the wider skills and employment opportunities and can significantly improve the likelihood of positive destinations for learners.

- **Ensures a secure and safeguarded environment** reducing the chances of children and young people becoming isolated and offers a range of opportunities



Empowered Learning is delivering one of the largest single city implementations in Europe in partnership with Glasgow City Council

to access tools to support the whole family to access services such as health and social care, with a particular emphasis on wellbeing and mental health support.

- **Delivers monitoring and tracking** to support teachers in raising attainment and tracking inclusion in and out of school. Significant time is saved in producing school reports via automation, while being tablet enabled and GDPR compliant. This makes performance management and school audits much less time consuming.

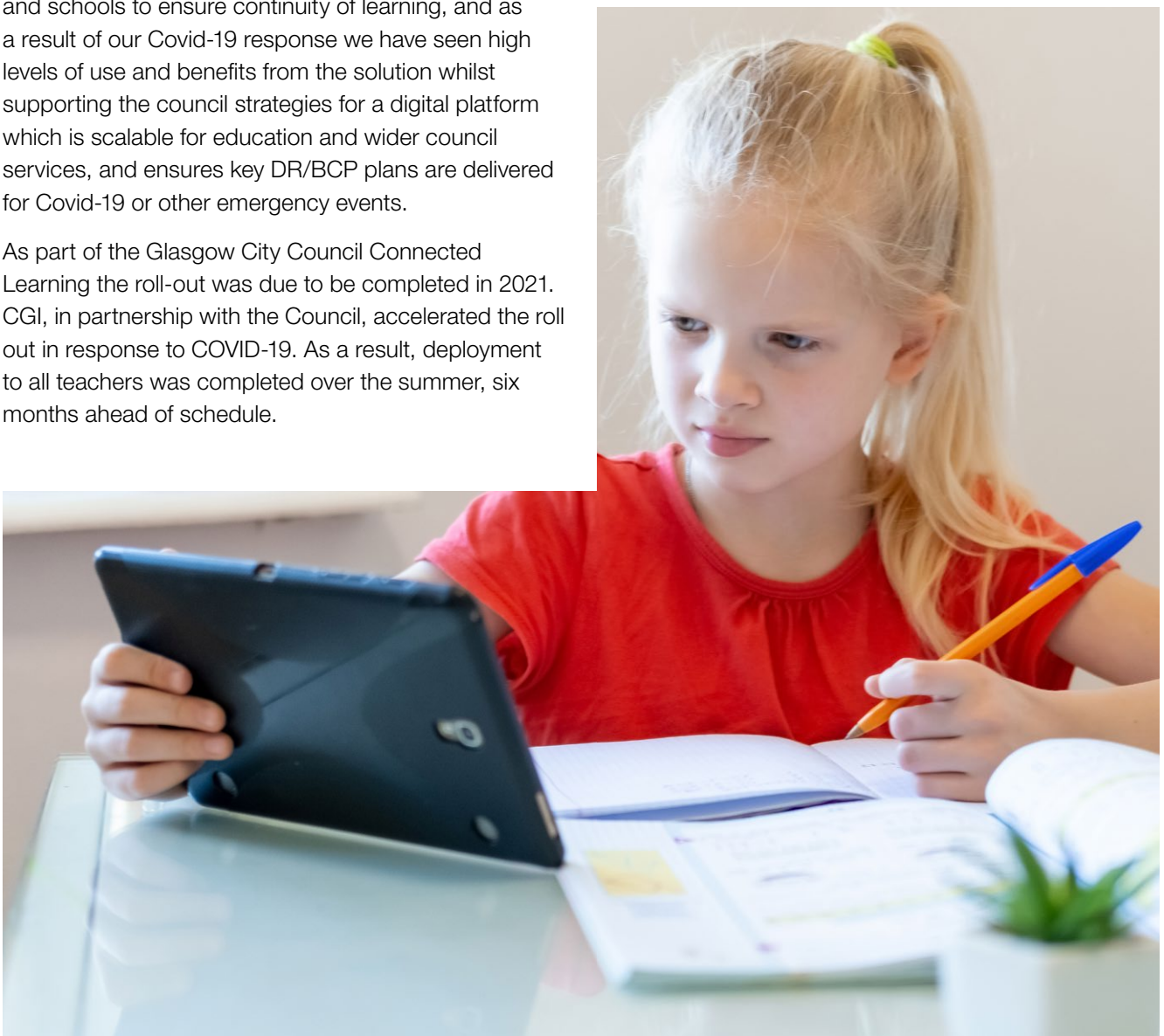
Empowered Learning in a crisis and the future

Covid -19 response

Almost no crisis modelling scenarios could have ever predicted the need to shut down schools urgently as part of the Covid-19 response. Yet, despite this now a stark reality, there remains a crucial requirement for Local Councils to ensure consistent continuity of services, including education. As part of this Empowered Learning has enabled Local Authorities and schools to ensure continuity of learning, and as a result of our Covid-19 response we have seen high levels of use and benefits from the solution whilst supporting the council strategies for a digital platform which is scalable for education and wider council services, and ensures key DR/BCP plans are delivered for Covid-19 or other emergency events.

As part of the Glasgow City Council Connected Learning the roll-out was due to be completed in 2021. CGI, in partnership with the Council, accelerated the roll out in response to COVID-19. As a result, deployment to all teachers was completed over the summer, six months ahead of schedule.

In the Scottish Borders, the Council Inspire Learning roll-out was accelerated – in this case so it could be completed before the national lockdown in March. As a result, nearly 6,300 pupils and their teachers in the Borders' nine secondary schools now have devices, with levels of use seen being extremely high with 96% of pupils and 93% percent of teachers using their tablets.



The future

As part of recently announced Empowered Learning education programme with the City of Edinburgh Council, key elements of the Empowered Learning solution are being implemented which focus on aligning and further progressing the good work already done to date.

The programme will see a phased roll out of a further 27,000 new iPads which will be issued to pupils/staff and completed by the end of 2022. There will also be refreshed iPads for up to 12,000 pupils/staff which will be added to the Empowered Learning solution. The wireless connectivity in schools will be expanded by providing wireless access points and a comprehensive programme of professional learning for teachers will be put in place.

At the completion of this programme, CGI will have over 100,000 teacher and learners on the Empowered Learning solution; this is well over 10% of the total Scottish school population, with a good mix of customers including the capital city, a very large city, and a very rural customer. CGI is also committed to further developing the Empowered Learning solution to be agnostic and to continue to address local and national education challenges and support key stakeholders on their education journey.

Did you know that CGI's Empowered Learning

Has implemented the Inspire Learning programme **in partnership with Scottish Borders Council**, a largely rural area

Has over 60,000 education devices managed and safeguarded

Will **have over 100,000 devices** managed, **more than 10% of the Scottish education population** once the City of Edinburgh Council Empowered Learning programme is completed

Has deployed monitoring and tracking web service **in over 100 schools**

Has access to the wider **CGI UK and global education solutions**

How Empowered Learning would look for you

As part of the Empowered Learning solution, CGI works in partnership with our clients to create an individual vision tailored to them. We work as one team to ensure the programme delivers the maximum benefit for key stakeholders.

- **Operational and business support** working with clients as 'one team' on key documents and processes, e.g. completion and delivery of initial business case, stakeholder communications, and a digital education transformation which leverages education experts and partners.
- **Teacher development tools** CGI has developed a comprehensive suite of teacher development and support tools to fully exploit opportunities for learning and teaching. We use online and face to face tools, including ongoing teacher training/CPD (Continuing Professional Development) with the use of education experts and partners with ongoing support and input into clients overall digital teaching strategy.
- **Teaching environment** assessed and updated where required for Network WAN, LAN, Wi-Fi, audio visual, school/classroom network performance in the classroom, and the effective use of cutting edge education Apps.
- **Implementation of devices** as part of this we will work together with our clients on identifying the specific builds and education apps required, user types e.g. teachers, students (early years/primary/secondary, ASL). We will then work on the detailed planning and scheduling of delivering the devices with the education team at school or home (expedited for Covid-19).
- **Ongoing safeguarding, security, support and control** enabling flexible management of devices in schools and at home, ensuring teaching and learning is supported in a secure, GDPR compliant environment which safeguards students.
- **Education web services** focused on supporting teachers monitoring and tracking student attainment from anywhere, and saves time on producing school reports e.g. 40 hours work can be reduced to as little as 5 hours.



Key benefits delivered to date for our customers

1

Provision of equal access to digital devices for learning to all learners, regardless of geography or family circumstance. During the pandemic, high levels of access were seen by students accessing learning via their digital devices.

2

Delivery of digital professional learning for teachers face-to-face and on-line.

3

Offered a wide range of opportunities for professional learning and a vast range of learning support on-line or face to face.

4

Delivered an accelerated deployment experience to thousands of teachers and tens of thousands of young people in times of crisis, ensuring continuity of learning.

5

Increased parents participation in education.

6

Improved teacher / student interaction and communication about schoolwork, in and out of the classroom via education specific apps e.g. Seesaw, Showbie etc...

7

100% of young people and staff using national learning network – GLOW.

8

Parent support groups set-up to ensure greater opportunities for learners and parent involvement is maximised.

9

Supported creation and delivery of education transformation programmes tailor made for individual education establishments and Local authorities including key objectives to evidence successful outcomes.

10

Provided dynamic and creative tools for learning - both in school and from home e.g. Robot coding, AR (augmented reality).

11

Delivered powerful tools for classroom management with Apple Classroom.

12

Improved the performance of the solution via updated/upgraded Networks WAN, LAN, Wi-Fi, Peer to Peer networks, Caching servers.

13

Improved teacher / student interaction and communication about schoolwork, in and out of the classroom via education specific apps e.g. Seesaw, Showbie etc...

14

Delivered a secure managed learning environment for all young people, ensuring ongoing security updates, GDPR compliance for Apps, and on-line safe-guarding via content filtering.

15

We have supported a range of digital awareness opportunities e.g. digital coffee mornings for parents and the wider community.



About CGI

Founded in 1976, CGI is among the largest IT and business consulting services firms in the world.

We are insights-driven and outcomes-based to help accelerate returns on your investments. Across 21 industry sectors in 400 locations worldwide, our 77,000 professionals provide comprehensive, scalable and sustainable IT and business consulting services that are informed globally and delivered locally.

Our commitment: Insights you can act on.

Get in touch

Find out more and view CGI's Empowered Learning case study [video](#), [animation](#) or access the [CGI education page](#)

View Empowered Learning customer stories:
[Scottish Borders Council Inspire Learning programme](#)
[Glasgow City Council Connected Learning programme](#)

To arrange a virtual meeting or visit contact:



Richard Sadler

richard.m.sadler@CGI.com

cgi.com/uk

Empower^{ed}
LEARNING
by CGI

CGI