

# CGI All Payments

Driving SWIFT payments



**C**GI All Payments has integrated SWIFT as a secure way of transmitting financial messaging for seamless wire transfers and payment processing.

ISO 20022 native, CGI All Payments is a modern technology platform that combines a powerful message routing and payment processing engine with advanced analytics, processing and liquidity monitoring features. All of these elements work together to increase efficiency, streamline straight-through processing and reduce transaction costs.

## SWIFT WIREROOM

- Support of all **SWIFT MT and MX** message types, including translation
- Support of all **gateway connectivity** options (FIN, InterACT, FileACT)
- **Multi-channel origination** via manual capture, recurring templates, interfaces from bank internal lines of business or clearing gateways
- **Dynamic traffic monitoring** and administration dashboards at the gateway and channel level with graphical comparison of current activity against history
- **Robust exception** alerting and management capabilities
- **Message enrichment/validation/routing** based on SWIFT-provided database files or third-party reference data in conjunction with user-defined business rules

## SWIFT PAYMENT PROCESSING

- **Multi-channel origination** via manual capture, recurring templates, interfaces from bank internal lines of business or clearing gateways
- **Inherent interoperability** with message parsing, formatting and validations rationalized into an native ISO 20022 payment object, allowing for a seamless CGI All Payments implementation
- **Configurable workflows** constructed by sequencing standard payment processing services (e.g., enrich, validate, duplicate checks, FX, OFAC/fraud, debit account balance validation, routing, stop checks, fees, booking, etc.)
- **Payment enrichment/validation/routing** based on SWIFT-provided database files or third-party reference data in conjunction with user-defined business rules
- **Straight-through processing (STP)** maximization with efficient and flexible exception handling and approval workflows, improving straight-



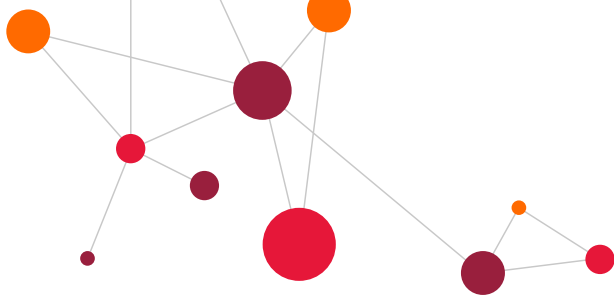
Whether their goal is to achieve the promise of real time or meet immediate compliance mandates, financial institutions must choose their own path for payments transformation. As a trusted advisor for more than 40 years, CGI guides clients along their journey—from assessing where they are today to helping them get to where they want to be.

CGI is a *company of firsts* in the payments industry, anticipating and proactively driving payments innovation for clients to become market leaders.

- CGI processes **40%** of global FX settlement volume.
- We process more than **20%** of SWIFT payment transactions.
- CGI All Payments provides improved **straight-through processing** and full-payment service capability.
- CGI handles more than **35%** of all U.S. wire-based transaction volumes (~\$3 trillion to \$5 trillion USD per day).
- Relationships with our top 10 banking clients globally span an average of **27 years**.

[cgi.com](https://cgi.com)

© 2020 CGI INC.



through processing over time through machine learning and robotic process automation

- **Inquiry and analytics** offers sophisticated online query tools in addition to detailed trends and analytics for tracking current and potential business
- **Cover payment automation and instruction** matching against both MT202COVs and MT910s
- **Cancel request** matching and processing of requests
- **Full Global Payments Innovation (GPI)** capabilities, including the use of GPI bank directory and SWIFT tracker
- **Automated end-of-day and start-of-day processing** with both global and entity specific configurations and reconciliation features

#### NOSTRO LIQUIDITY MANAGEMENT FEATURES

- **NOSTRO liquidity dashboard** (liquidity breakdown, queue depth and acknowledgment status, reconciliation status, trends)
- **Automated liquidity checks**, updates and queuing
- **Auto release** of queued payments

#### SWIFT INTERFACE

- **Real-time and file-based integration options** compatible with virtually all gateway providers
- **Seamless end-to-end processing** when deployed in conjunction with the CGI All Payments wireroom, which offers multi-gateway integration, flexible host/channel/line relationships and data transformation workflows to facilitate adoption of global interoperability standards (ISO 20022)

#### WHAT IS CGI ALL PAYMENTS?

CGI All Payments is a modern, modular, cloud-ready solution built on global industry standards and an ISO 20022 native architecture to ensure your payments business is future-proof. It helps you reduce transaction costs and improve your bottom line by increasing levels of STP and reducing time to market for new revenue streams.

CGI All Payments offers everything you need to transform your payments environment into an efficient, full-service, money-moving operation. With our deep expertise and industry knowledge embedded in the platform, CGI All Payments helps clients achieve their goals and enables the introduction of innovative services, faster processing, lower costs and greater transparency.

#### A TRUSTED ADVISOR TO MANAGE THE PACE OF CHANGE

As a collaborative partner, CGI helps clients develop an end-to-end strategy and roadmap for modernizing, replacing or preserving existing systems to compete and win the race to real-time payments.

Our consultants are steeped in payments and have firsthand experience with many of the regulatory changes worldwide. This know-how, combined with our proven CGI All Payments solution, ensures clients can modernize their systems at a pace that is manageable and affordable, while minimizing cost and risk.

#### ABOUT CGI

Founded in 1976, CGI is among the largest IT and business consulting services firms in the world. Operating in hundreds of locations across the globe, CGI delivers an end-to-end portfolio of capabilities, from strategic IT and business consulting to systems integration, managed IT and business process services and intellectual property solutions. CGI works with clients through a local relationship model complemented by a global delivery network to help clients achieve their goals, including becoming customer-centric digital enterprises.

For more information about CGI, visit [cgi.com](https://cgi.com), or email us at [info@cgi.com](mailto:info@cgi.com).

**[cgi.com](https://cgi.com)**

© 2020 CGI INC.