

# CGI View360: Visual Analytics for Housing

**CGI**

Experience the commitment®



**H**ousing Authorities need tools that help them synthesize large amounts of disparate information in one place. Excel spreadsheets of addresses and demographic statistics can't provide a complete picture of housing patterns across a jurisdiction.

## VIEW360

View360 provides visual analytics for housing authorities to manage multiple layers of information in one place.

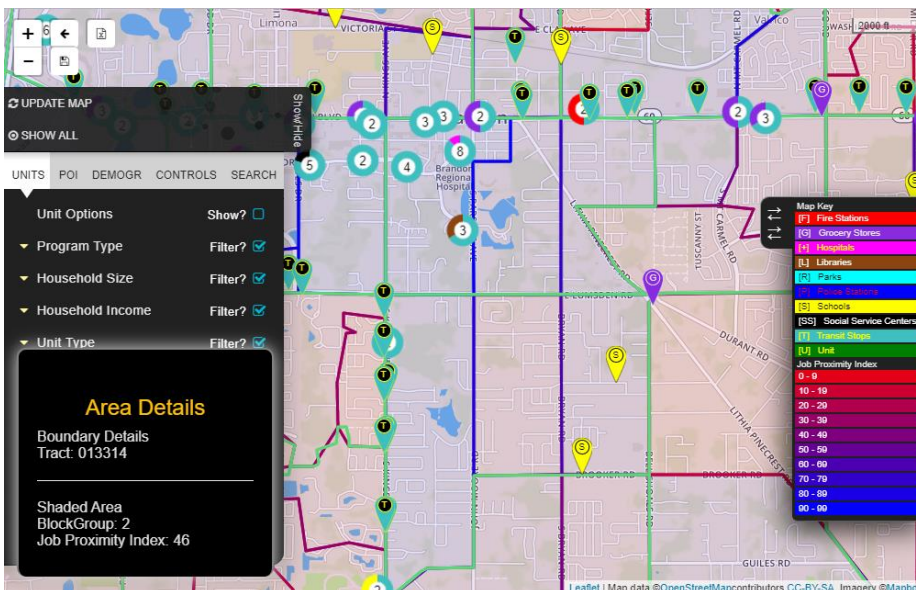


Image 1: CGI View360 dashboard image displays its multi-layer functionalities

## CGI VIEW360 FEATURES

Listed below are some of the many features CGI View360 offers:

- Analyze multiple data elements within a PHA jurisdiction in a map view
- Maintains subsidized housing data and socio-economic indicators
- View data in layers such as PHA housing data, income levels, crime index and transportation
- View location amenities such as job opportunities, schools, hospitals and public transportation and more
- Identify areas of opportunities
- Integrate with housing ERP and other systems
- Secure access with data import administration
- Secure cloud hosted, zero installation to client
- Generate, print or export reports

Built from scratch to the specifications of the client, View360 can be customized to access data from disparate sources and providing a 360-degree view of:

- Local geographic points of interests most important to the client (see Image 1, right side: local points of interests like schools, hospitals, parks, police stations, etc. are categories that can be filtered and color-coded under Map Key)
- Demographic indicators such as diversity index, median age, population growth, etc.
- Real-time subsidized unit information to get a clear picture of the impact of housing policies (see Image 1, left side: unit options, program types, household size, household income, etc.)
- An Area Details box that is customizable and a control tab to manage display

To learn more about CGI View360 and other solutions, visit

[www.cgi.com/usfederal](http://www.cgi.com/usfederal) or email

[BPServices@cgifederal.com](mailto:BPServices@cgifederal.com).

[cgi.com/usfederal](http://cgi.com/usfederal)

© 2019 CGI INC.

## MAP VISUALIZATION AND ANALYTICS



Better understand and manage relationships between subsidized housing resources, demographic and other socio-economic indicators.

## IDENTITY TRENDS AND RELATIONSHIPS



Layer different information to see data come together to identify areas of similarity. Using different datasets and overlapping them shows like areas to help you make better decisions.

## VIEW360 FEATURES

View360 utilizes different combinations of data within the PHA jurisdiction:



**Zoom in-out and pin** on county, zip code, census tract and street code. Pin units to the maps and depending on zoom level, see number of units or unit details.



**Filter and search** different unit information and other search criteria such as unit size, year built and move-in/move-out dates. General search for narrowing data focus is also available.



**Time series visualization** by accessing current information and other search criteria such as unit size, year built and move-in/move-out dates. General search for narrowing data focus is also available.



**Data from multiple sources** - View360 stores datasets from multiple sources including monthly synchronization with your housing data, socio-economic indicators, census income levels, crime index, local amenities and transportation.



**Identify and monitor opportunity areas** and track new leases within these areas to assess the impact of your efforts to expand housing opportunities for HCV participants.



**View amenities** through layers of data with an overlay of amenity points such as school district jurisdiction boundaries and school metrics, hospitals, medical centers, public transportation, social services, police and fire, shopping malls and grocery stores.



**Reports and exporting** - see reports based on all data stored in the system such as count and percentage of HCVP mover families with children who moved to low poverty census tracts in the PHA's principal operating area during the last completed PHA fiscal year. Export mapped data into Excel spreadsheet or PDF to create your own custom reports.

## ABOUT CGI FEDERAL

CGI Federal Inc. is a wholly-owned U.S. operating subsidiary of CGI Inc., dedicated to partnering with federal agencies to provide solutions for defense, civilian, healthcare and intelligence missions. Founded in 1976, CGI is among the largest independent IT and business consulting services firms in the world. With approximately 77,500 consultants and professionals across the globe, CGI delivers an end-to-end portfolio of capabilities, from strategic IT and business consulting to systems integration, managed IT and business process services and intellectual property solutions. CGI works with clients through a local relationship model complemented by a global delivery network that helps clients digitally transform their organizations and accelerate results. With Fiscal 2018 reported revenue of C\$11.5 billion, CGI shares are listed on the TSX (GIB.A) and the NYSE (GIB). Learn more at [cgi.com](http://cgi.com).

## OUR MANAGEMENT CONSULTING SERVICES

- Financial Management
- Operations Strategy
- Business Transformation
- Shared Services
- Change Management
- Program Management
- Advanced Analytics
- Performance Management
- IT Advisory Services