

# Protecting Federal Agencies

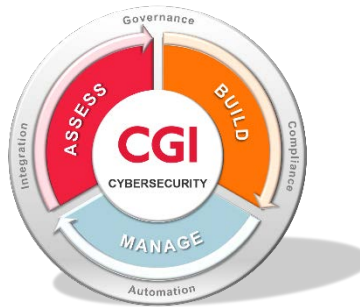
With a comprehensive cybersecurity services approach

# CGI

Experience the commitment®

**W**hile the risk of cyber-attacks has been present since the earliest days of IT networks, the rapid adoption of cloud, mobile devices and the Internet of Things have introduced new vectors for attack—and have dramatically increased the complexity of protecting critical information.

CGI offers a full suite of services and solutions that address these rapidly changing risks throughout the IT environment. Built around the three principal phases of a project—assess, build and manage—our solution set will assist your organization from beginning to end.



## ASSESS

CGI's Cybersecurity Consulting & Advisory Services help organizations achieve a sound information security posture for their enterprise. To protect system confidentiality, integrity and availability, CGI employs a risk management model to achieve compliance with policy directives. To assess your existing security profile, we offer:

- Strategic cybersecurity advisory services for mission critical system implementations
- Cybersecurity strategy and workshops
- Regulatory compliance assessments
- Security assessments
- Cybersecurity policy support
- Compliance and audit services
- Evaluation of existing security posture
- FISMA/FedRAMP/ATO compliance management
- Security tools and frameworks—Governance, Risk and Compliance (GRC), Nessus, NIST, HITRUST, Acceptable Risk Safeguards (ARS), ISO 27000
- Advisory on policies and procedures to address NIST-recommended controls
- Security risk management and mitigation strategies

## BUILD

CGI builds individualized security engineering solutions that address architecture, application and data security needs and protect your organization from cybersecurity threats. CGI's Engineering & Implementation Services team brings together diverse experience in cybersecurity, engineering, secure coding, cloud computing, compliance

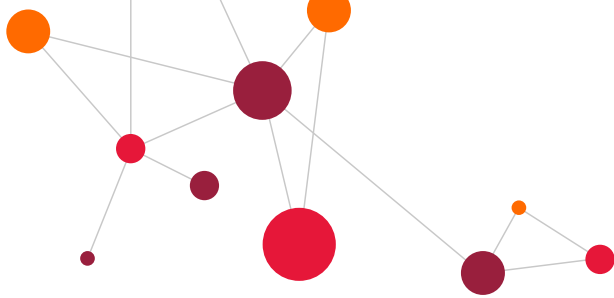


## CGI FEDERAL KEY FOCUS AREAS

- **Insider Threat**—Employees or others with authorized access can easily exfiltrate information.
- **Continuous Monitoring/Mitigation**—Malicious activity can happen quickly. Monitoring the flow of network traffic moment by moment can detect it as it is happening and prevent harm.
- **Cloud Security**—Storing data in the cloud and moving it to and from the remote system creates an attack surface that requires safeguarding.
- **Application Security**—Secure application development and testing minimizes risk.
- **Critical Infrastructure/Process Control**—Critical infrastructure, on which the nation depends, is a tempting target for certain types of cyber criminals.
- **Security Operations**—From the choice of security tools to their ongoing application, cybersecurity requires continuing attention and consistent management.

[cgi.com/federal/cyber](https://cgi.com/federal/cyber)

© 2019 CGI INC.



and project management. To aid in building tailored cybersecurity solutions, we offer:

- Strategic cybersecurity engineering and implementation services for mission critical system implementations
- DevSecOps implementation
- Cybersecurity framework development and implementation
- Security tool deployment, configuration and tuning
- Insider threat program development
- Secure code review/static application security testing (SAST)
- Dynamic application security testing (DAST)
- Mobile application testing
- Open source components assessment (OSCA)
- Internet of things (IoT) and database security services
- Network and perimeter security
- Penetration testing and vulnerability assessments
- Customized remediation and control implementation
- Web application firewall (WAF) configuration and policy management

## MANAGE

CGI's Security Operations/Managed Security Services delivers monitoring, detection and response services for network defense through CGI's Managed Security Operations Center, in accordance with industry best practice and standards. CGI's subject matter experts leverage industry-leading tools, threat intelligence and an SOC network to protect the organization from cybersecurity threats. Our cybersecurity management capabilities include:

- Strategic cybersecurity management services for mission critical system implementations
- IT Security Monitoring/OT Security Monitoring
- Data Protection and User Activity Monitoring
- Incident Response and Forensics
- MSS services, which include:
  - Security information and event management (SIEM)
  - Certified vulnerability assessments (CVA)
  - Incident management and response
  - 24x7 US-based SOC for threat monitoring & alerting
- CGI global SOC information sharing network
- Host intrusion detection (HID)/File integrity monitoring (FIM)/Antivirus (AV)
- Optional database access monitoring and information systems security (ISSO)
- Server endpoint security
- Cyber threat intelligence

## MORE INFORMATION

For more information about CGI's Cybersecurity solutions, qualifications and experience, please contact us at [cybersolutions@cgifederal.com](mailto:cybersolutions@cgifederal.com).

### CYBERSECURITY OFFERING FRAMEWORK



**ASSESS**  
Consulting  
& Advisory Services



**BUILD**  
Engineering  
& Implementation Services



**MANAGE**  
Security Operations / Managed  
Security Services

The CGI Cybersecurity Offering Framework provides a full portfolio of cybersecurity solutions covering consulting and advisory, engineering and implementation and security operations and managed security services, providing a holistic strategy to successfully secure your agency.

### ABOUT CGI

Founded in 1976, CGI is one of the largest IT and business consulting services firms in the world. Operating in hundreds of locations across the globe, CGI professionals help clients to achieve their goals, including becoming customer-centric digital organizations. We deliver an end-to-end portfolio of capabilities, from high-end IT and business consulting to systems integration, outsourcing services and intellectual property solutions that help accelerate clients' results. CGI works with clients around the world through a unique client proximity model complemented by a global delivery center of excellence network to help clients accelerate results, transform their organizations and drive competitive advantage.

For more information about CGI, visit [cgi.com](http://cgi.com), or email us at [info@cgi.com](mailto:info@cgi.com).

[cgi.com/federal/cyber](http://cgi.com/federal/cyber)

© 2019 CGI INC.