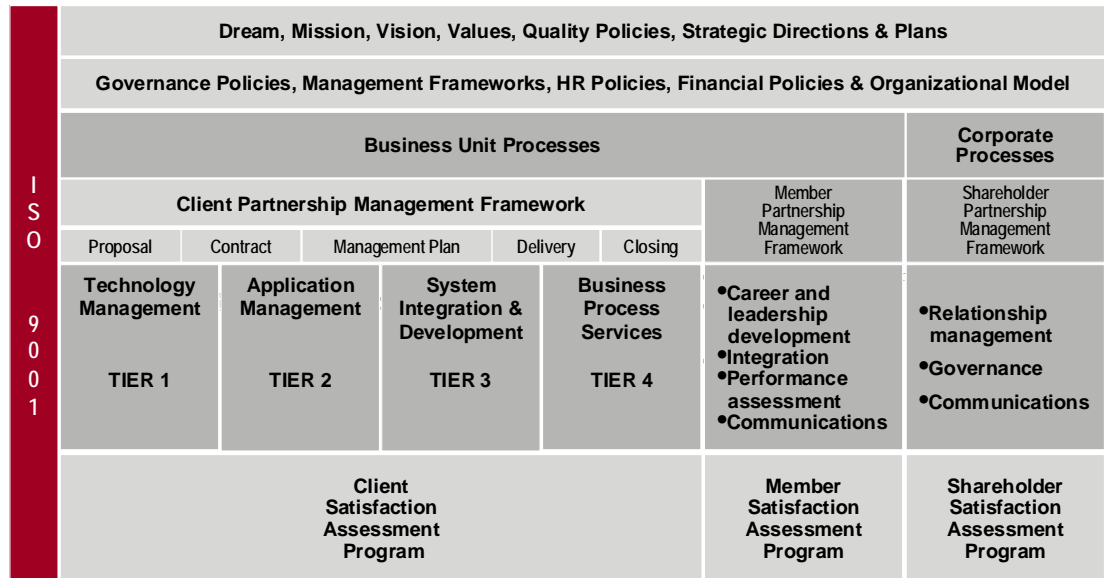




2. CGI Management Foundation

CGI Management Foundation

INTRODUCTION



© CGI Group Inc. – All rights reserved.

In the above diagram, we have assembled the key elements that define and guide the management of CGI. For this reason, these elements have been called the CGI Management "Foundation." They reflect our collective experience and have been developed to make our actions as efficient as possible. This efficiency must first and foremost respect a number of principles, which are themselves integrated into the CGI Management Foundation and deserve to be emphasized:

- 1) the primacy of the dream, the mission, the vision and the values of the company;
- 2) the equilibrium between the legitimate interests of our clients, members and shareholders;
- 3) the balance between the need to assure cohesiveness and rigour in the management of the company and the commitment to promote autonomy, initiative and entrepreneurship.

The CGI Management Foundation intends to guide rather than prescribe.

Thus, it offers a certain amount of freedom in order to remain focused on our essential goal: to provide high-quality services truly adapted to our clients' needs.

We will now examine the individual elements of the Foundation.

DREAM, MISSION, VISION, VALUES, QUALITY POLICIES, STRATEGIC DIRECTIONS AND PLANS

Dream, Mission, Vision, Values, Quality Policies, Strategic Directions & Plans

The first section of the diagram aims at ensuring that all decisions are well aligned on the dream, mission, vision and values of the company. These are described in the first section of this document.

The next component is our Quality Policy. It has earned ISO 9001 certification, which requires that CGI demonstrate every year to external evaluators that its Quality Policy is applied across all of its operations.

The final component of this uppermost section focuses on Strategic Directions and Plans. These are established on an annual and triennial basis according to a rigorous process that includes extensive participation from within the company as well as from our clients and our shareholders. The emphasis placed on involving all business units and corporate services in the planning process helps ensure that the objectives established and methods selected are shared by all to the fullest extent possible and that they generate enthusiastic commitment in their implementation.

GOVERNANCE POLICIES AND FRAMEWORKS, HUMAN RESOURCES POLICIES, FINANCIAL POLICIES AND ORGANIZATIONAL MODEL

Governance Policies, Management Frameworks, HR Policies, Financial Policies & Organizational Model

The first component of the second section refers to the company's governance policies and frameworks. These policies and frameworks are comprised of the following documents:

- 1) The Charters of the Board of Director and its committees;
- 2) the Codes of Ethics, to which members, officers and directors of the company must adhere;
- 3) the Operations Management Framework, which outlines the delegation framework with respect to decision making (e.g. who may authorize and sign a million dollar proposal; who may authorize promotion to a vice-president's position).

The second component involves human resources policies. All new members of the CGI team are asked to read You and CGI, which outlines all of the company's human resources policies, from compensation and training to career development.

The third component focuses on financial policies. It covers how we determine our profitability objectives, target ratios (e.g. profit margins, maximum percentage allotted to certain expenses), how and when our financial results are prepared, the rules governing disclosure of results, etc. These policies and rules are outlined in a document under the responsibility of the Chief Financial Officer, and the most pertinent elements are communicated to all of our members.

Finally, the organizational model favoured by CGI is one that provides considerable autonomy to our business units. This model consists of creating business units in major cities in the regions that we serve. We also put a high priority on establishing solid business relationships within these regions, particularly with the decision makers from the companies operating in these cities. Each of these "metropolitan" business units is structured according to the key economic sectors served by CGI (finance, telecommunications, etc.). The implementation of a service offering for clients which have operations in multiple regions or countries is achieved through collaboration among business units, which, in the case of large contracts and particularly those involving outsourcing, can result in entire business units being dedicated to our major clients or to groups of clients who share the same needs. Consulting services and centres of expertise throughout CGI ensure that knowledge, strategies and leading-edge solutions are shared within the entire company.

BUSINESS UNIT PROCESSES AND PARTNERSHIP MANAGEMENT FRAMEWORKS

Business Unit Processes					Corporate Processes
Client Partnership Management Framework					Shareholder Partnership Management Framework
Proposal	Contract	Management Plan	Delivery	Closing	
Technology Management Tier 1	Application Management Tier 2	System Integration & Development Tier 3	Business Process Management Tier 4	<ul style="list-style-type: none"> - Career and Leadership Development - Integration - Performance Assessment - Communications 	<ul style="list-style-type: none"> - Relationship Management - Governance - Communications
(CMM level 5)					

The Business Unit Processes explain how the Client Partnership Management Framework and the Member Partnership Management Framework are applied locally in each business unit. They also describe how business development activities and other initiatives crucial to the smooth operation of each business unit should be managed.

The activities at the core of the operational management of CGI are aligned onto three management frameworks: the Client Partnership Management Framework, the Member Partnership Management Framework and the Shareholder Partnership Management Framework. These frameworks are the cornerstones of a continuous improvement process that is supported by the documentation and the systematic, audited application of our best

practices. The process is also constantly fuelled by client, member and shareholder evaluations of our activities and performance.

The first is the Client Partnership Management Framework. CGI's leadership position in its industry is contingent upon its ability to deliver services of the highest quality to its clients at competitive prices and within the established time frames. The Client Partnership Management Framework is the basis of how we manage our relationships with our clients. For each of type of mandates (outsourcing, projects, and consulting services), this framework guides our teams in the achievement of all phases of their work, from the proposal to its completion of the mandate. It is based not only on our best practices, but also relies on the industry's best standards and practices. A rigorous, regular program to evaluate the satisfaction of our clients allows us to measure our progress and continuously improve our practices. This evaluation is conducted on a face-to-face basis with the client, who must sign the evaluation. Each year, CGI establishes improvement objectives based on the results obtained the previous year.

The Member Partnership Management Framework guides all of our managers through the communications and dialogue activities they have with their teams. This cycle begins with welcoming activities and is followed by informal meetings, team meetings at various levels, career planning and performance reviews. We measure the satisfaction of our members annually through a survey conducted by an outside firm. Members can also use the survey to communicate their observations and suggestions to the head of their business unit or the CGI executive team. The results are published, and commitments are made by the leaders of both the business units and the company itself to address the comments submitted and make needed improvements.

The Shareholder Partnership Management Framework describes our information and relationship program with our investors beyond the prescribed activities associated with corporate governance, transparency and the disclosure of results.

Client Satisfaction Assessment Program	Member Satisfaction Assessment Program	Shareholder Satisfaction Assessment Program
---	---	--

The final section refers to the way we measure our results. First and foremost, we systematically measure the satisfaction levels of active clients regularly. We also measure member satisfaction annually, and we are currently developing a shareholder satisfaction measurement tool.