



_experience the commitment™

BureauLink® Enterprise

Business
solutions
through
information
technology®



CGI expands your capacity to manage major credit solicitations, instant credit programs, and other programs that require fast processing of credit bureau reports and other credit information.

With BureauLink® Enterprise, you have access to an easy-to-use interface between a credit originations system—such as our industry-leading Enterprise Originations™ platform—and the major U.S. and Canadian consumer and business credit bureaus. BureauLink also integrates with our legacy credit originations system, ACAPS Enterprise, and our collections system, CACS Enterprise, to provide a real-time view of customers' credit reports.

Features

With BureauLink Enterprise, you can:

Select a credit bureau based on your institution's credit policy. The credit bureau can be manually overridden when circumstances dictate. Further, if one bureau is experiencing a disruption in service, an alternate bureau can automatically be selected.

- Offer powerful, yet flexible features that control how detailed credit information is interpreted. Output may be used for credit scoring, exception reviews, and decisioning purposes.
- Access the highest-quality credit bureau information by automatically merging individual bureau report files and by removing duplicate information.
- Provide online screens and hard-copy reports that allow users to view both summarized credit bureau characteristics as well as detailed credit data.
- Operate the system as a stand-alone or have interface with other automated systems through comprehensive application programming interfaces (APIs).

PREMIER CAPABILITIES IN ACCESSING AND USING CREDIT INFORMATION

Supported releases and products

BureauLink Enterprise contains significant updates to support new credit bureau release versions and products. The following table summarizes these updates.

Bureau/ Release Supported	BureauLink Enterprise Supported Products
D&B Version 7.0	<ul style="list-style-type: none"> • Bankers Advisory Service w/ Bankers Financial Report • Business & Summary Business Information Reports • Credit Advisory System w/ Financial Information Report • Credit Scoring Report • DUNS Financial Profile • DUNS Underwriting Guide • Family Tree: Summary Report, Complete Report, Branch Report • Industry Norms • Model Statement • Payment Analysis Report • Rating Verification • Various Packet Reports including but not limited to <ul style="list-style-type: none"> – Assets & Liabilities – Net Worth – Commercial Credit Score – Paydex Reports – Payment Summary Reports – SBRI Reports – Custom SV
Experian Version 7.0	<ul style="list-style-type: none"> • Consumer Credit Report • Bankruptcy Watch • Connect Check • Cross View & Cross View Score • Direct Check • Demographics Response • Fair Isaac Models (various) 2.0 & 3.0 • Fraud Detection Services (Fraud Shield, OFAC Name Matching Service) • ID Profile • Identification Only Response • MDS Bankruptcy • National Fraud Database • National Risk Score & New National Risk Score • New Equivalency Score • Social Search Service (SSN) • Scorex • Vantage Score
Experian Business Version 6.0	<ul style="list-style-type: none"> • Business Profile • Individual UCC Filings • Intelliscore • Data Segment Service: <ul style="list-style-type: none"> – Executive Summary – Trade Payment – Collection Agency – Public Record & UCC – Commercial Financial Information – Background/Demographics – Government – Commercial Summary Segment
Equifax Canada Version 5.0	<ul style="list-style-type: none"> • Consumer Credit Report • Bankruptcy Navigator Index • Beacon 3.0 & 4.0 • Fraud Detection Services (Card Alert, SAFESCAN)

Banking and Investments Group
Banking. Transformed.™

Through CGI's transformational banking approach, CGI helps banks become true service providers by transforming their approach, processes and technologies from a product to a client-centered orientation.

CGI offers management consulting, systems integration expertise, and technology solutions that address the ongoing challenges of the consumer and small business lending market. Our specialized solutions use leading assets, such as ACAPS® Enterprise, CACS® Enterprise, Strata® Enterprise, BureauLink® Enterprise, and ACLS® Enterprise, to facilitate the entire credit life cycle—from originations and servicing a loan through to recoveries.

Together, our products and consulting services meet your needs to build a more cost-efficient business, minimize risks, support a multitude of distribution channels, and provide a consistent customer interaction across channels and functions.

CGI has long had a specialization in this area, resulting in strong partnerships with lenders and a leading position in providing trusted consulting for many phases of the lending process.

CGI is ranked 15th as part of the 2007 FinTech 100, a collaboration of *American Banker* and Financial Insights, an IDC Company. This ranking is categorized and evaluated based on fiscal year end revenues and the percentage of revenues attributed to financial services, with data gathered from surveys completed by vendors, as well as original research and market analysis conducted by Financial Insights.

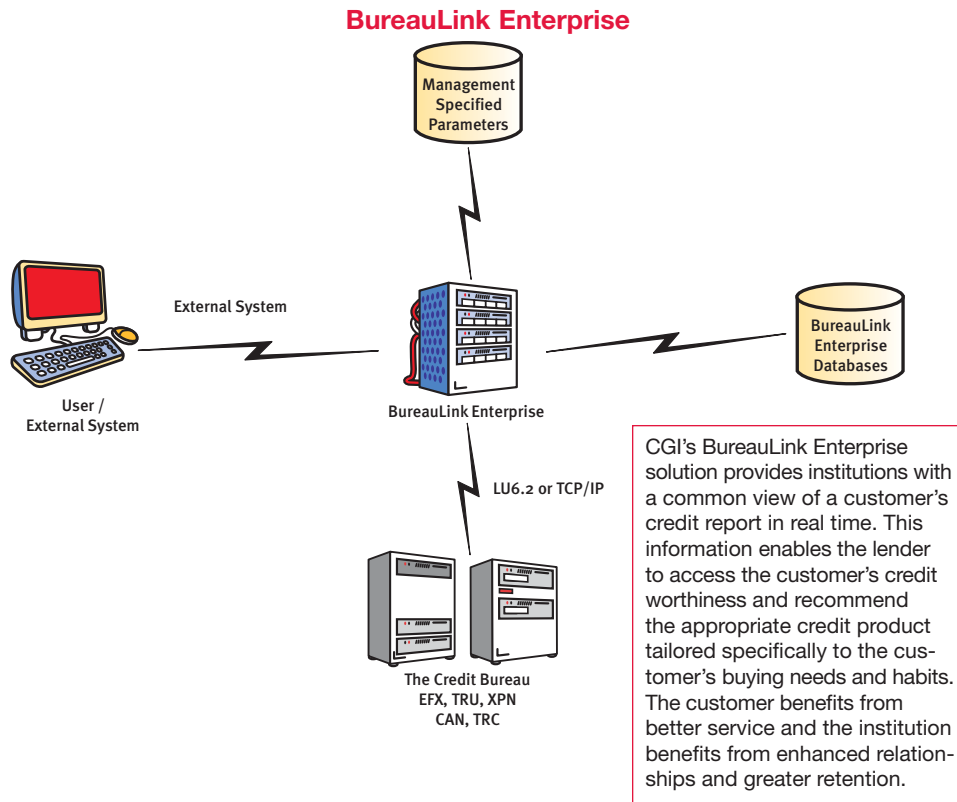
Bureau/ Release Supported	BureauLink Enterprise Supported Products
Equifax Version 5.0	<ul style="list-style-type: none"> • Consumer Credit Report • Bankruptcy Navigator 3.0 & 99 • Beacon 5.0 • Car Credit 99 • Credit Union • DTEC (SSN) • D.A.S & Enhanced D.A.S • Fraud Detection Services (Fraud Advisor Reports, SAFESCAN, OFAC Alert) • ID Advisor & Plus • MarketMax • MultiVision Exchange, Driver's License, & Positive ID • On-line Directory • Pinnacle 2.0 & FACTA Pinnacle 2.0 • VantageScore
Equifax Small Business Exchange Version 5.3	<ul style="list-style-type: none"> • Business Principal Report • Finance Account Management Score & Acquisition Score • OFAC Alert Commercial/Principal • Non Financial Generic Risk Score • Small Business Credit Report (Standard Full & Standard w/ no Trade History) • Small Business Credit Risk Score for Suppliers/Financial Services/Suppliers • Small Business Modeling Attributes v.1 • Small Business/Principal Score
Innovis Version 4.1	<ul style="list-style-type: none"> • Consumer Credit Report • Authentication Report • Corporate Data Report • Directory Information • Innovis Scores • Social Search Report
TransUnion Version 4.0	<ul style="list-style-type: none"> • Consumer Credit Report • ASSIST scores • Delphi • Empirica 98 • Fico Classic • Fraud Detection & Fraud Management Platform • Fraud Detection Services (Hawk Alert, ID Mismatch Alert, OFAC Advisor Service) • Horizon & Horizon 2003 • IDSEARCH & SCORE SEARCH • ID Mismatch Alert • Income Estimate (Tie) • Instant Prescreen • Look & Look Phone • OFAC Advisor Service • Precision & Precision 2003 • Revenue Predictor Model • Total ID • TRACE & TRACE PLUS (SSN) • Property ASSIST • TransRisk & TransRecovery • VantageScore
TransUnion Canada Version 4.0	<ul style="list-style-type: none"> • Consumer Credit Report • Account Number Assist • Empirica 98 • Horizon • Fraud Detection Services (Hawk Alert & TransAlert)



Technical Specifications

BureauLink Enterprise operates in an IBM mainframe-based environment using CICS and VSAM. The solution was designed for maximum online processing efficiency, including compliance with IBM's CICSplex/Sysplex operating environment. BureauLink Enterprise is supported under IBM's COBOL MVS and High Level Assembler programming languages.

BureauLink Enterprise is also available on HP UNIX utilizing Microfocus Server Express.



Fast, flexible services

BureauLink Enterprise offers institutions easier access to credit bureau information and can be implemented as a stand-alone solution or as part of a comprehensive platform. Benefits include:

- Enables more profitable credit decisions by performing automated functions that support risk management policies
- Provides an efficient and productive operating environment that eliminates time consuming manual interpretation and review of credit reports
- Improves customer service by incorporating features that reduce credit decision turnaround time
- Reduces staff training costs by presenting credit reports in a common format, regardless of the bureau issuing the report

With the BureauLink solution, your institution has easier access to credit bureau information, which means faster credit decisions at lower costs.

CORPORATE PROFILE

Founded in 1976, CGI Group Inc. is one of the largest independent information technology and business process services firms in the world. CGI and its affiliated companies employ approximately 26,000 professionals.

CGI provides end-to-end IT and business process services to clients worldwide from offices in Canada, the United States, Europe, Asia Pacific as well as from centers of excellence in North America, Europe and India. CGI's annual revenue run rate stands at CDN\$3.7 billion and at June 30th, 2007, CGI's order backlog was CDN\$12.4 billion.

CGI shares are listed on the TSX (GIB.A) and the NYSE (GIB) and are included in the S&P/TSX Composite Index as well as the S&P/TSX Capped Information Technology and MidCap Indices.

Website: www.cgi.com.