

\_experience the commitment



# MView for Reporting and Analytics

## On time, on the mark

### Features

- MPower data assets leveraged via state-of-the-art Business Integration tools
- Complete control of query design, the information you need, when you need it
- Web-portal deployment, secured access
- Presentation quality results

### Benefits

- Make your reports work for you—add/remove/move columns, change sorting, formatting, data filters with point and click tools
- Apply fonts and graphics to enhance your reporting
- Extend your brand with corporate skins, logos and colours
- Zero footprint, scalable to meet the reporting and analytics needs of large firms

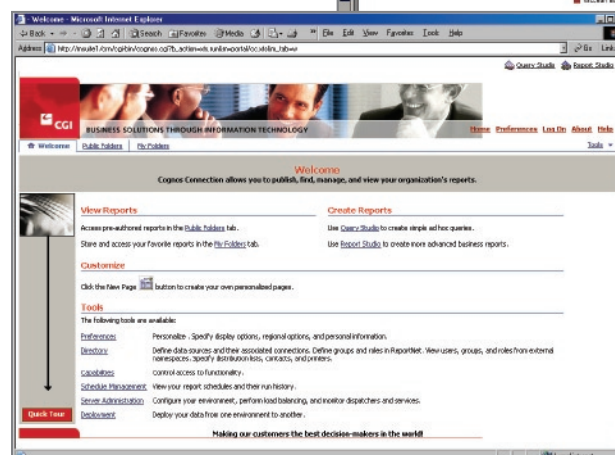
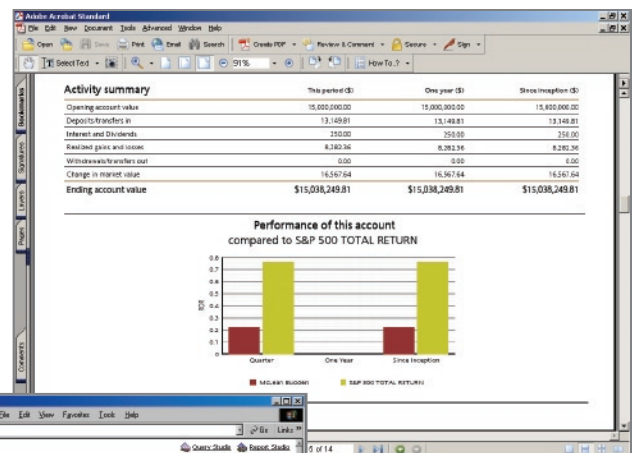
## Keeping ahead of the industry

MView delivers the user reporting and analytics component of MSuite's consolidated portfolio service offering. Pre-populated with MPower data, your information assets are at your finger tips. Perform ad hoc queries with drag-and-drop ease. Licensed power-users create presentation quality materials complete with advanced graphics and layout capabilities.



*Save reports and queries for re-use and share with colleagues*

*High-performance reporting*



*User-friendly zero footprint online query facility*

*Dedicated database eliminates production impacts*

## Keeping ahead of the industry

### Architecture

- Client/Server application
- Revolutionary Cognos ReportNet® reporting platform
- N-tiered, multi-server, multi-threaded architecture

### Features

- A browser-based data warehouse designed specifically with portfolio management in mind
- Populated from MPower, readily integrates other data sources
- Consolidate, analyze and disseminate information from your total data repository
- Create online inquiries, drill-downs, reporting and graphics
- Point and click functionality
- PDF formatted reports – Adobe Acrobat Reader
- User-friendly, zero footprint data inquiry facility allows licensed users to build and view their own ad hoc statement data queries

### Technical considerations

#### *Connection*

- Zero footprint delivery
- Via dedicated connection or internet
- Security via firewall, authentication process control access to database

#### *Minimum system requirements*

- P4, 1GHz, 512KB RAM, 1024 X 768 screen resolution

## Corporate profile

Founded in 1976, CGI is a world-class leader in information technology (IT) and business process services. Through our focused industry expertise in financial services, government, healthcare, telecommunications, utilities, retail, distribution and manufacturing, we offer end-to-end services including systems integration, strategic consulting, business solutions and the full management of IT and business functions.

Backed by a rich heritage, global delivery capabilities and a strong financial position, CGI has a solid track record of on-time, on-budget delivery and high-value repeat performance. Rooted in quality and management processes, our goal is to fully meet client objectives, serving as an accountable, flexible and objective partner.

We approach every engagement with one objective in mind—to help clients win and grow.

Business solutions through information technology™

